

NEW PRODUCTS NOW AVAILABLE



**CYCLOPS
MARINE**

Load Sensors for Yachts and Dinghies

Founded In 2018, Cyclops Marine brings together sailing expertise and wireless load sensing technology into a range of products, all designed and manufactured in the UK.

smarttune®

Swap your existing 'dumb' turncrew into your best tuning and safety tool with the Cyclops smarttune®. Accurate load sensing and Bluetooth technology is housed in a low windage cover. Essential for forestays, the real time loads are an ideal indicator of both headsail shape and also the impact of backstay and mainsheet on the mainsail.

Further gains can be made utilizing the side stays for refined rig balance and achieving repeatable fast settings. With standard imperial thread sizes, the devices are simple to specify and quick to install. With the addition of a Cyclops gateway, the loads can be viewed on your boat electronics as well as your phone within minutes.

Thread size	1/4"	5/16"	7/16"	1/2"	5/8"	3/4"	7/8"	1"
Calibrated load	500kg	750kg	1,900kg	2,500kg	3,800kg	5,000kg	8,000kg	12,000kg
Weight	180g	180g	390g	390g	620g	1,500g	1,530g	1,900g
Dimensions	55x112x18mm	55x112x18mm	60x170x28mm	60x170x28mm	65x230x31mm	70.5x275x40mm	70.5x275x40mm	68x400x40mm
Power	Internal LiPo	Internal LiPo	AAA batteries	AAA batteries	AAA batteries	AAA batteries	AAA batteries	Internal LPO
Battery life	80 days	80 days	16 months	16 months	16 months	16 months	16 months	100 days
On/off control	Yes	Yes	n/a	n/a	n/a	n/a	n/a	Yes

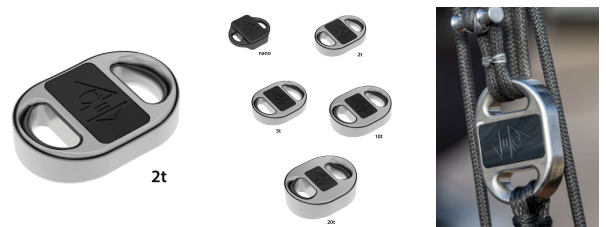


smartlink²

smartlink2® brings you the smallest, lightest and strongest range of wireless load sensors for running rigging. The new Mk2 version delivers better range, battery life, app experience and the ability to synchronise directly with leading boat electronics systems. Multiple sensors can relay directly to wireless displays or our app, or via a gateway to your boat displays. Manufactured from high performance titanium or aluminium, smartlink2® delivers real time load information for any performance or safety critical line. Find and repeat the fastest settings, enabling you to quantify adjustments as the wind speed and angle changes.

Accurately calibrated to give you repeatable settings, this is the preferred load measurement device for leading America's Cup Team American Magic, as well as several Olympic and IMOCA teams. Available in five sizes dependent on your load requirement, applicable from sheets to halyards, tack lines to backstays, vang to runners.

Model	nano	2t	5t	10t	20t
Max working load	600kg	2,000kg	5,000kg	10,000kg	20,000kg
Dimensions	64x55x17mm	79x55x19mm	83x66x22mm	93x74x25mm	107x88x39mm
Strop diameter	4mm	9mm	10.7mm	12.4mm	15mm
Weight	72g	160g	210g	360g	798g



smartlink®ee

The smartlink®ee range is designed for live pin to pin load sensing. Light, strong and robust, the new Mk2 version delivering even better range, longer battery life, improved app experience with simple wireless charging.

Manufactured from titanium, the range is designed for integration into standing rigging, ideally suited to 'Metre' boats and classic dayboats, delivering real time load information to enable precision and accurate rig set up to these traditional boats.

Find and repeat the fast settings, quantify adjustments as the wind speed and angle changes. Complete with logging feature for post race analysis. Multiple sensors can be viewed on either our app or your boat displays.

Model	2tee	5tee	10tee
Max working load	2,000kg	5,000kg	10,000kg
Dimensions	97x52x17mm	120x66x19	140x72x28
Pin diameter	12mm	19mm	28.5mm
Weight	160g	390g	710g



smarttoggle®

smarttoggle® is the secret to flawless furling and optimal performance of non-structural furling sails. Precision load data from smarttoggle® allows you to find your fastest setting quickly and reliably for Code sails and reachers. The load share ratio between the sail luff and the furling cable is key to maximum performance. Leading sailmakers provide recommended sail and cable load settings for each sail. smarttoggle® gives the crew live loads, while the Cyclops Marine app and Gateway both log this data for review. This makes the learning process quick and easy, allowing the crew to hit and repeat the fastest settings every time. smarttoggle® also assists with ensuring the cable is at optimum load for most effective furling, ensuring you can safely reduce sail area when needed.

Model	FE-02	FE-03
Max working load	4.5t	7t
Dimensions	140x50x35mm	160x55x50
Pin diameter	12	16
Mass	230g	530g
Accuracy range	+/-45kg	+/- 70



Digital Direct Pin - Custom Made

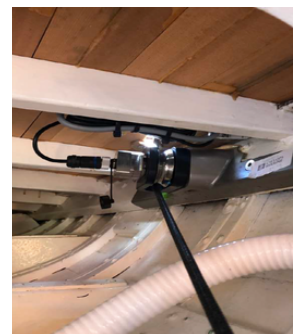
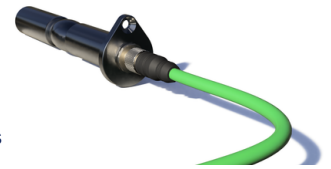
Digital direct pins are designed to replace existing pins, measuring loads in standing rigging such as forestays and shrouds. This gives sailors highly reliable data to optimise performance and avoid catastrophic rig overload.

Each pin is custom designed to your exact boat dimensions, unique to Cyclops is enclosing the digitisation of the load within the pin. This digital direct feature removes the need for additional amplifiers, simplifies install and ensures the factory calibration is maintained.

Load pins are supplied with custom made solutions to prevent pin rotation, this avoids misalignment and maximises accuracy.

Key Features

- Factory calibrated (no in-situ calibration required)
- No amplifiers required
- Custom designed
- Starting at 20mm diameter
- 17-4/PH stainless steel as standard (other materials available)
- Temperature compensated within -10° to +40°C range
- Rated IP68
- Digital output from pin connector
- NMEA2000, NMEA0183, RS485 output options
- Multiple anti-rotation options
- High accuracy calibration at ±1% of MWL
- Other outputs such as mV/V, 0-5V and 4-20mA available
- Barrelling option
- Calibration certificates available on request

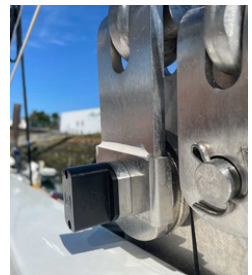


Wireless Pin - Custom Made

Cyclops Marine Wireless Load Pins take the performance of load pins into the future, enabling wireless installations, revolutionary in the sailing industry. Designed as drop-in replacements for existing pins in standing rigging, all electronic parts are contained within the sealed pin body, eliminating the risk of water ingress and allowing the simplest of installations. Wireless load pins open up the possibilities in load sensing technology as they are unrestricted by wired connections, providing opportunities to monitor loads in locations previously deemed impossible such as above furler installations. Ideally suited to a plug & play safety warning system for the fast growing multihull cruising market, easily integrating into B&G's new warning dial system.

Key Features

- First wireless load pin in sailing
- Wireless charging
- Available for above furler installations
- Custom made to your specification
- Plug and play into safety warning system
- Starting at 20mm diameter
- Custom designed
- 17-4/PH stainless steel as standard (other materials available)
- Temperature compensated within -10° to +40°C range
- Multiple anti-rotation options
- Barrelling option
- Calibration certificates available on request



Connectivity

Phone app

iOS and Android options, live, easy to read loads directly to your phone. Up to 16 sensors, intuitive logging function for post sailing analysis. 'Load Talk' feature to hear your loads through headphones. New feature to connect to sensor and ability to change sensor frequency.



Electronics direct

Both Sailmon and Vakaros Atlas 2 deliver live loads directly to the display, essential for any dinghy or sportsboat sailor to optimise their sailing. The highly intuitive Sailmon App enables the direct load data to be analysed alongside other performance metrics to help super charge an improvement path.

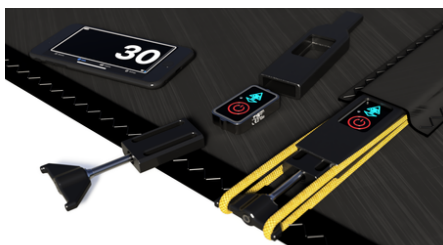


Gateway connection

Enables sailors to see live loads in real time on to the boat displays. Compatible with all major electronic brands, plugging directly into your existing displays or processor, our Gateway installs below deck, receiving signals from sensors and converts them into useful second-by-second information at sailor's finger tips.



smartbatten - Nextgen Data Driven Sail Performance!



Despite advancements in sail technology, the traditional visual determination of batten compression settings often results in inaccuracies. In response, Cyclops Marine has developed a smart solution - smartbatten - placed between the batten and 'rocket' tightener, providing real-time compressive load data. This ensures sailing teams consistently achieve optimal settings.

Key Features

- Ensures Optimal Sail Performance.
- Accurately monitors the load in the sail battens.
- Helps sailors hit fast, repeatable settings more precisely.
- Gives live compressive load data.
- Can be re-charged in less than one hour.

**Call our friendly team today for details of local Cyclops suppliers in your region.
1800 ARCUSW (1800 272 879)**



9 KELLER CRESCENT
CARRARA QLD 4211



2/6 GREENFIELD STREET
BANKSMEADOW NSW 2019



T 1800 ARCUSW 1800 272 879
E SALES@ARCUSWIRE.COM



ABN 25 000 465 163
arcuswire.com