



hamma[®]

MARINE CATALOGUE

2 0 2 2

arcuswire.com



Photo by Dean Cooperman

Welcome to our hamma[®] Marine catalogue.

Showcasing the latest stainless steel wire rope and fittings, you'll find the perfect solution for your needs.

QUALITY

Manufactured by global leaders Kinzi and KOS, the hamma[®] range is recognised as the industry leader for quality, reliability and value, and is exclusively distributed by the Arcus Wire Group across Australasia.

HERE TO SUPPORT

As a recognised industry leader celebrating 58 years in 2022, we bring a wealth of experience, knowledge and expertise to help our customers with stainless steel projects no matter the size or complexity.

Today our hamma[®] wire rope and fittings are used by riggers to support masts on some of the world's largest ocean going yachts.

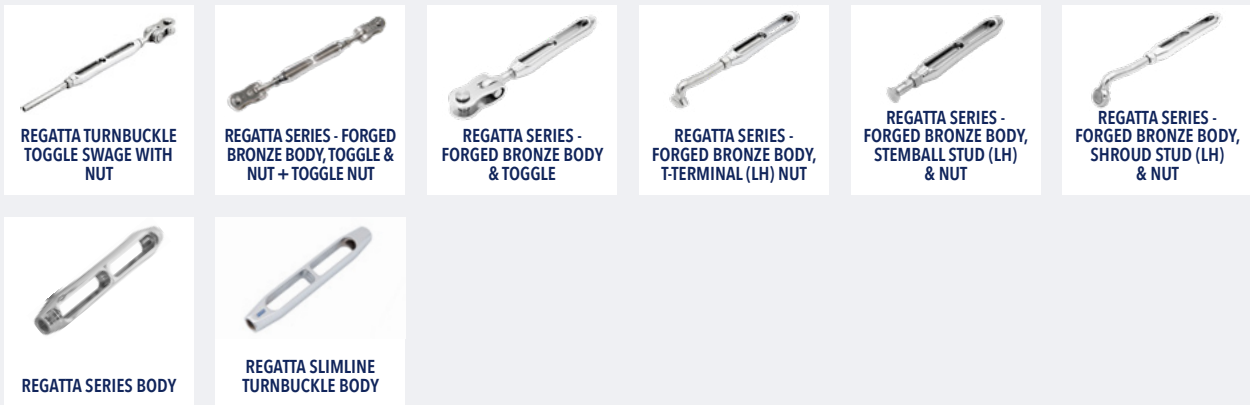
"We don't just aim to meet your expectations and project requirements; we strive to exceed them while providing remarkable value." David Sheedy, CEO.

CONTACT US

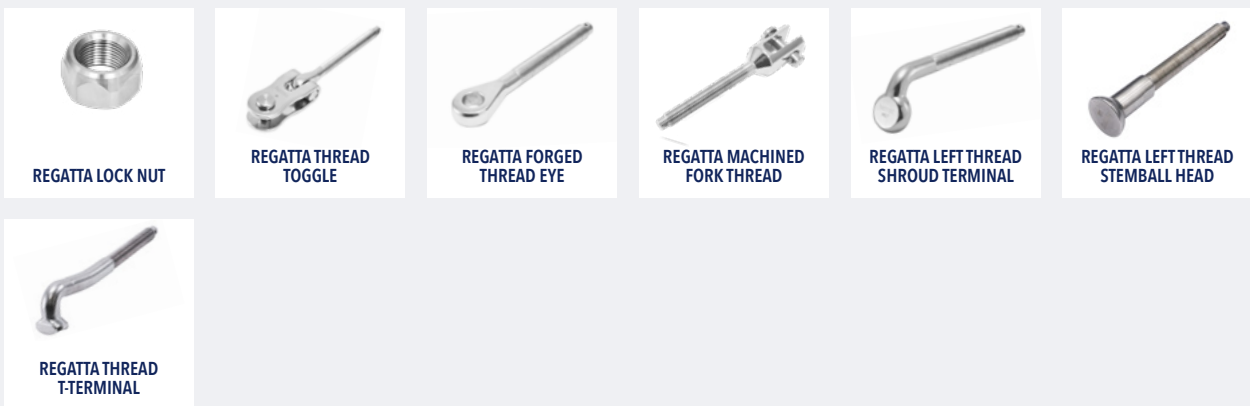
If you have any questions or need help selecting the right hamma[®] products to meet your needs call our expert team on 1800 272 879 or email sales@arcuswire.com.



hamma® Regatta Turnbuckles Page 9



hamma® Regatta Threaded Pages 14



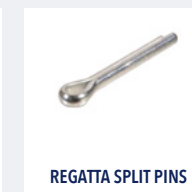
hamma® Regatta Swage Studs Pages 18



hamma® Regatta Swage Toggles Page 20



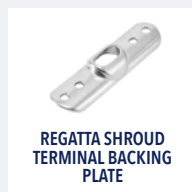
hamma® Regatta Hardware Page 22



hamma® Regatta Stemballs/Cups Page 24



hamma® Regatta Shroud Terminals Page 27



hamma® Regatta Swage T-Terminals Page 28



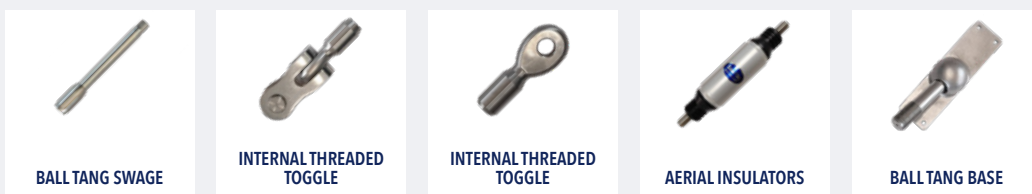
hamma® Regatta Machined Terminals Pages 30



hamma® Regatta Swage Eyes/Forks Page 31



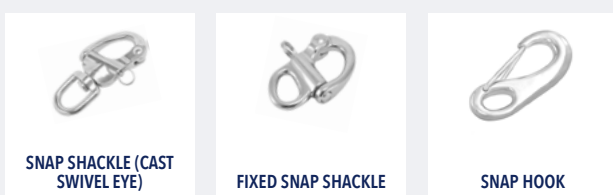
SeaRig Page 32



hamma® Industrial Life Line Fittings Page 34



hamma® Snap Shackles Page 37



hamma® Wire Rope Page 38

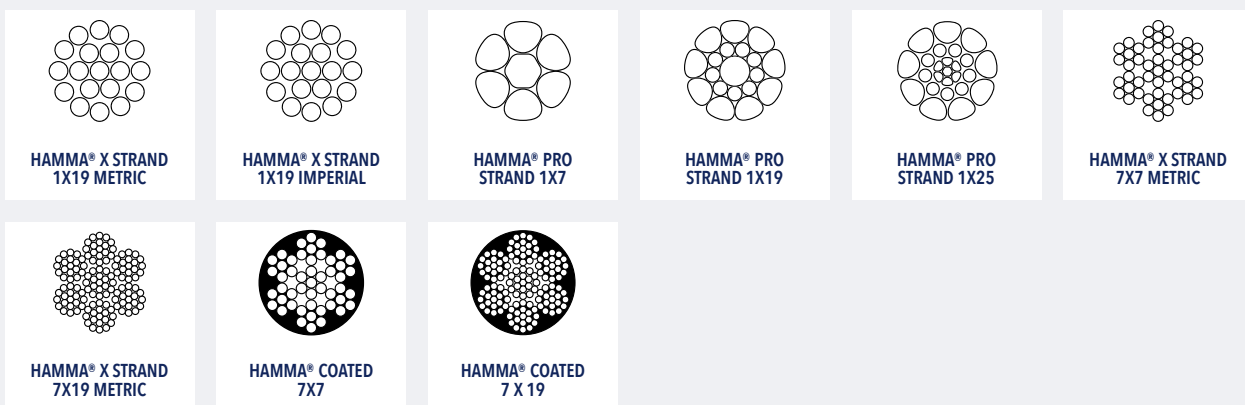




Photo courtesy Colson Yacht Design

hamma® Industrial Shackles Page 44



D SHACKLE

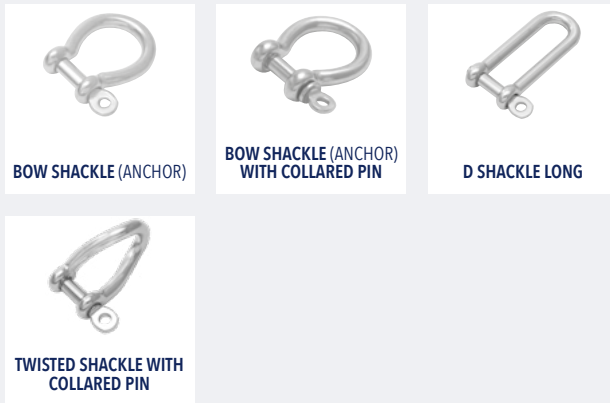
D SHACKLE WITH COLLARED PIN

D SHACKLE WIDE

D SHACKLE LONG WITH COLLARED PIN

HALYARD SHACKLE CROSS BAR WITH LOCKING PIN

TWISTED SHACKLE



BOW SHACKLE (ANCHOR)

BOW SHACKLE (ANCHOR) WITH COLLARED PIN

D SHACKLE LONG

TWISTED SHACKLE WITH COLLARED PIN

hamma® Industrial Wire Rope Grips & Thimbles Pages 47



THIMBLE (HEAVY DUTY)

THIMBLE (STANDARD)

hamma® Industrial Rings & Pads Page 48



ROUND RING

SQUARE PAD EYE

SINGLE PAD EYE WITH SINGLE RING

DOUBLE PAD EYE WITH DOUBLE RINGS

DIAMOND PAD EYE

hamma® Industrial Turnbuckles & Terminals Page 50



JAW-JAW RIGGING SCREW

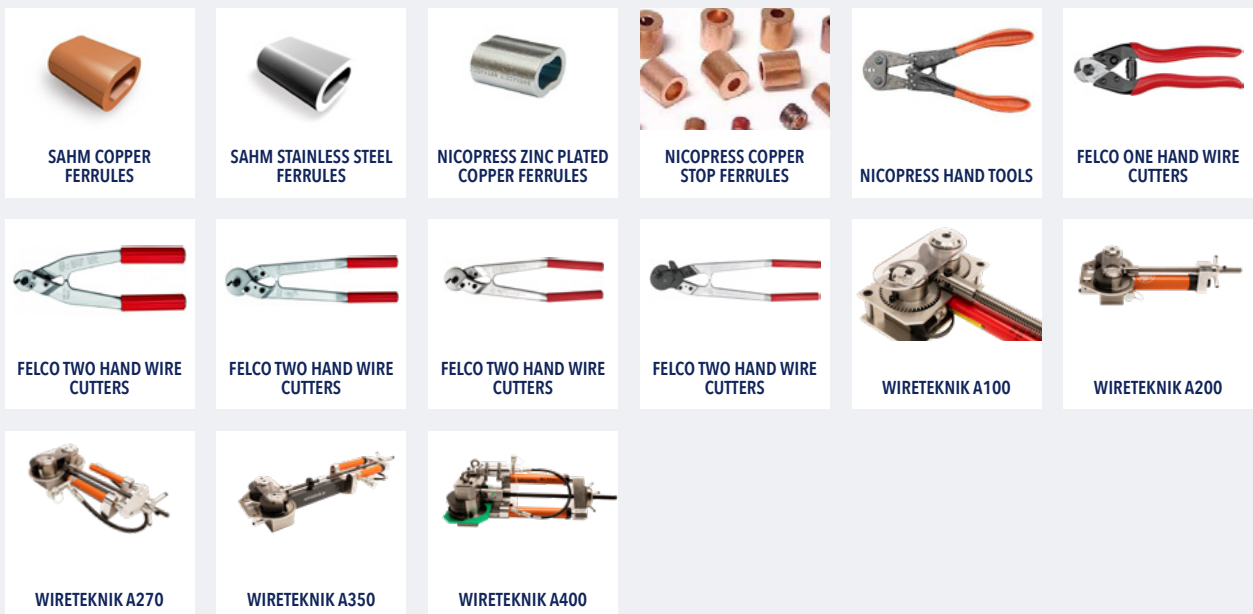
JAW-SWAGE

SWAGE STUD (RHT)

SWAGE EYE

SWAGE FORK

Ferrules & Tools Page 53



SAHM COPPER FERRULES

SAHM STAINLESS STEEL FERRULES

NICOPRESS ZINC PLATED COPPER FERRULES

NICOPRESS COPPER STOP FERRULES

NICOPRESS HAND TOOLS

FELCO ONE HAND WIRE CUTTERS

FELCO TWO HAND WIRE CUTTERS

FELCO TWO HAND WIRE CUTTERS

FELCO TWO HAND WIRE CUTTERS

FELCO TWO HAND WIRE CUTTERS

WIRETEKNIK A100

WIRETEKNIK A200

WIRETEKNIK A270

WIRETEKNIK A350

WIRETEKNIK A400

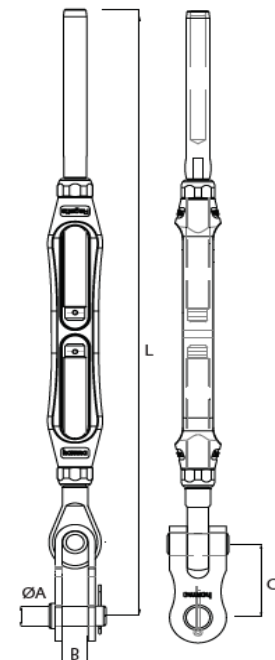


hamma[®] Regatta Turnbuckles

hamma[®] Regatta Turnbuckle Toggle Swage with Nut

HM-TTSNM

HM-TTSNM CODE	CABLE (MM)	Ø A PIN/THREAD	MBL (KGF)	B (MM)	C (MM)	L (MM)	
						MIN	MAX
HM-TTSNM-0304	3.0mm	1/4"	1,550	7	18.0	223	290
HM-TTSNM-0404	4.0mm	1/4"	1,800	7	18.0	234	305
HM-TTSNM-0405	4.0mm	5/16"	2,200	9	20.3	260	350
HM-TTSNM-0505	5.0mm	5/16"	2,600	9	20.3	280	370
HM-TTSNM-0506	5.0mm	3/8"	3,200	11	24.3	315	415
HM-TTSNM-0606	6.0mm	3/8"	3,700	11	24.5	325	425
HM-TTSNM-0607	6.0mm	7/16"	5,000	14	24.5	375	495
HM-TTSNM-0608	6.0mm	1/2"	6,800	14	26.8	385	505
HM-TTSNM-0708	7.0mm	1/2"	6,800	14	26.8	395	515
HM-TTSNM-0808	8.0mm	1/2"	6,800	14	26.8	410	530
HM-TTSNM-0810	8.0mm	5/8"	10,900	18	36.5	470	610
HM-TTSNM-0910	9.0mm	5/8"	10,900	18	36.5	485	625
HM-TTSNM-1010	10.0mm	5/8"	10,900	18	36.5	495	640
HM-TTSNM-1012	10.0mm	3/4"	15,900	22	36.4	555	710
HM-TTSNM-1212	12.0mm	3/4"	15,900	22	35.8	580	740
HM-TTSNM-1414	14.0mm	7/8"	21,500	25	38.1	660	830
HM-TTSNM-1616	16.0mm	1"	28,300	28	40.7	730	920
HM-TTSNM-1918	19.0mm	1 1/8"	32,000	32	77	815	1079



HM-TTSN CODE	CABLE (INCH)	Ø A PIN/THREAD	MBL (KGF)	B (MM)	C (MM)	L (MM)	
						MIN	MAX
HM-TTSN-0605	3/16"	5/16"	2,600	9	20.3	283	375
HM-TTSN-0606	3/16"	3/8"	3,200	11	24.3	317	420
HM-TTSN-0706	7/32"	3/8"	3,600	11	24.5	317	420
HM-TTSN-0807	1/4"	7/16"	5,000	14	24.5	317	500
HM-TTSN-0808	1/4"	1/2"	6,800	14	26.8	385	510
HM-TTSN-0908	9/32"	1/2"	6,800	14	26.8	392	520
HM-TTSN-1210	3/8"	5/8"	10,900	18	36.5	487	628
HM-TTSN-1412	7/16"	3/4"	14,800	18	35.8	560	730
HM-TTSN-1614	1/2"	7/8"	16,600	25	38.1	625	810

TECHNICAL DATA

Body material: Forged Bronze
 Surface treatment: Chromed / "E.P." (Electro polished)

hamma® Regatta Series - Forged Bronze Body, Toggle & Nut + Toggle Nut

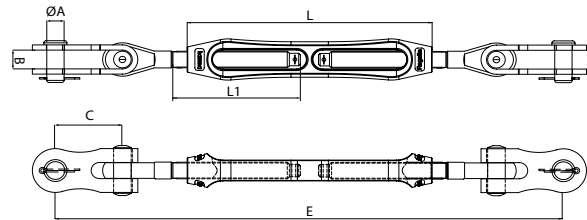
HM-TTTN

HM-TTTN CODE	SIZE M (THREAD)	ØA (MM)	B (MM)	C (MM)	E MIN/MAX	L (MM)	L1 (MM)	MBL (KGF)
HM-TTTN-04	1/4"-28UNF	6.35	7	29	231/295	114	59	1,800
HM-TTTN-05	5/16"-24UNF	8	9	35	258/348	132	69	2,400
HM-TTTN-06	3/8"-24UNF	9.5	11	40.5	303/403	155	80	3,600
HM-TTTN-07	7/16"-20UNF	11	14	49	371/487	180	94	5,000
HM-TTTN-08	1/2"-20UNF	12.7	14	49	380/580	190	98	6,800
HM-TTTN-10	5/8"-18UNF	15.8	18	61	463/603	223	117	10,900
HM-TTTN-12	3/4"-16UNF	19	22	70	540/696	258	135	15,900
HM-TTTN-14	7/8"-14UNF	22.2	25	75	610/780	290	149	21,500
HM-TTTN-16	1"-12UNF	25.4	28	92	695/885	322	168	28,300



TECHNICAL DATA

Forging material: Forged Bronze / AISI316-DIN 1.4401
 Surface treatment: Chromed / "E.P." (Electro polished)



hamma® Regatta Series - Forged Bronze Body, Toggle & Nut

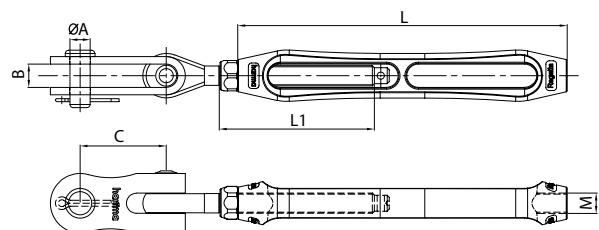
HM-BTN

HM-BTN CODE	SIZE M (THREAD)	ØA (MM)	B (MM)	C (MM)	L (MM)	L1 (MM)	MBL (KGF)
HM-BTN-04	1/4"-28UNF	6.35	7	29	114	59	1,800
HM-BTN-05	5/16"-24UNF	8	9	35	132	69	2,400
HM-BTN-06	3/8"-24UNF	9.5	11	40.5	155	80	3,600
HM-BTN-07	7/16"-20UNF	11	14	49	180	94	5,000
HM-BTN-08	1/2"-20UNF	12.7	14	49	190	98	6,800
HM-BTN-10	5/8"-18UNF	15.8	18	61	223	117	10,900
HM-BTN-12	3/4"-16UNF	19	22	70	258	135	15,900
HM-BTN-14	7/8"-14UNF	22.2	25	75	290	149	21,500
HM-BTN-16	1"-12UNF	25.4	28	92	322	168	28,300
HM-BTN-18	1.1/8UNF	28.5	32	92	385	196	32,000
HM-BTN-20	1.1/4UNF	31.75	38	110	440	224	40,500



TECHNICAL DATA

Forging material: Forged Bronze / AISI316-DIN 1.4401
 Surface treatment: Chromed / "E.P." (Electro polished)



hamma® Regatta Series - Forged Bronze Body, T-Terminal (LH) Nut

HM-BTTN

HM-BTTN CODE	SIZE M (THREAD)	ØA (MM)	B (MM)	L2 (MM)	L (MM)	L1 (MM)	BACKING PLATE CODE
HM-BTTN-05S	5/16"-24UNF	20	9	110	132	59	HM-BPTT-04
HM-BTTN-05	5/16"-24UNF	20	11	120	132	69	HM-BPTT-05
HM-BTTN-06S	3/8"-24UNF	20	11	130	155	80	HM-BPTT-05
HM-BTTN-06	3/8"-24UNF	28	14	140	155	94	HM-BPTT-0607
HM-BTTN-07	7/16"-20UNF	28	14	155	180	98	HM-BPTT-0607
HM-BTTN-08S	1/2"-20UNF	28	14	191	190	117	HM-BPTT-0607
HM-BTTN-08	1/2"-20UNF	33	18	150	190	135	HM-BPTT-0810
HM-BTTN-10	5/8"-18UNF	33	18	160	223	149	HM-BPTT-0810

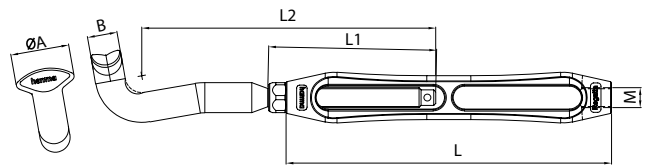


TECHNICAL DATA

Forging material: Forged Bronze / AISI316-DIN 1.4401
 Surface treatment: Chromed / "E.P." (Electro polished)

FIELD OF APPLICATION

Not guaranteed for greater than 40% of break load of 1X19 wire.

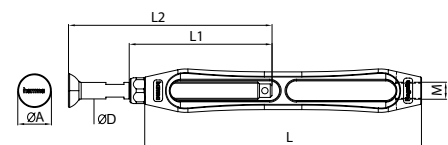


Backing Plates - See Pages 29

hamma® Regatta Series - Forged Bronze Body, Stemball Stud (LH) & Nut

HM-BSBN

HM-BSBN CODE	SIZE M (THREAD)	ØA (MM)	ØD (MM)	L2 (MM)	L (MM)	L1 (MM)
HM-BSBN-05	5/16"24UNF	18.8	9	103	132	69
HM-BSBN-06	3/8"24UNF	18.8	9	114	155	80
HM-BSBN-07	7/16"-20UNF	21	12.5	129	180	94
HM-BSBN-08S	1/2"-20UNF	21	12.5	133	190	98
HM-BSBN-08	1/2"-20UNF	27	16.1	138	190	98
HM-BSBN-10	5/8"-18UNF	27.7	17.8	172	223	117
HM-BSBN-12	3/4"-16UNF	33.3	21.4	212	258	135
HM-BSBN-14	7/8"-14UNF	33.3	21.4	222	290	149



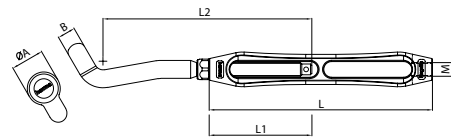
TECHNICAL DATA

Forging material: Forged Bronze / AISI316-DIN 1.4401
 Surface treatment: Chromed / "E.P." (Electro polished)

hamma® Regatta Series - Forged Bronze Body, Shroud Stud (LH) & Nut

HM-BSTN

HM-BSTN CODE	SIZE M (THREAD)	ØA (MM)	B (MM)	L2 (MM)	L (MM)	L1 (MM)	BACKING PLATE CODE
HM-BSTN-05	5/16"-24UNF	23	12.5	134	132	69	HM-BPST-06
HM-BSTN-06	3/8"-24UNF	23	12.5	145	155	80	HM-BPST-06
HM-BSTN-07	7/16"-20UNF	29	13.1	164	180	94	HM-BPST-08
HM-BSTN-08S	1/2"-20UNF	29	14.5	157	190	80	HM-BPST-08
HM-BSTN-08	1/2"-20UNF	30.5	16.5	174	190	80	HM-BPST-10
HM-BSTN-10	5/8"-18UNF	30.5	18	191	223	100	HM-BPST-10
HM-BSTN-10L	5/8"-18UNF	33	18	200	258	100	HM-BPST-10
HM-BSTN-12	3/4"-16UNF	33	18	219	290	130	HM-BPST-10
HM-BSTN-12L	3/4"-16UNF	39	21	249	322	135	HM-BPST-1112
HM-BSTN-14	7/8"-14UNF	39	21	249	385	149	HM-BPST-1112



TECHNICAL DATA

Forging material: Forged Bronze / AISI316-DIN 1.4401
 Surface treatment: Chromed / "E.P." (Electro polished)



Backing Plates - See Pages 27

hamma® Regatta Series Body

HM-BODY

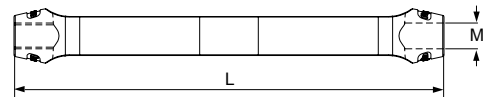
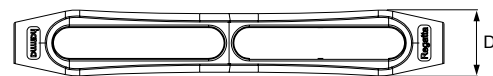
HM-BODY CODE	SIZE M (THREAD)	D (MM)	L (MM)	MBL (KGF)
HM-BODY-04	1/4"-28UNF	18.0	114	1,550
HM-BODY-05	5/16"-24UNF	20.4	132	2,400
HM-BODY-06	3/8"-24UNF	24.6	155	3,750
HM-BODY-07	7/16"-20UNF	28.8	180	5,000
HM-BODY-08	1/2"-20UNF	31.3	190	6,800
HM-BODY-10	5/8"-18UNF	39.4	223	10,900
HM-BODY-12	3/4"-16UNF	46.5	258	15,900
HM-BODY-14	7/8"-14UNF	52.6	290	21,500
HM-BODY-16	1"-12UNF	60.7	322	28,300
HM-BODY-18	1.1/8"-12UNF	68.7	385	32,000
HM-BODY-20	1.1/4"-12UNF	76.9	440	40,500



TECHNICAL DATA

Body material: Forged Bronze
 Surface treatment: Polished 'ultra' chrome coating

Also available in polished bronze finish.



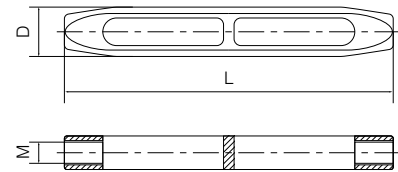
hamma® Regatta Slimline Turnbuckle Body

HM-SBODY

HM-SBODY CODE	SIZE M (THREAD)	D (MM)	L (MM)	MBL (KGF)
HM-SBODY-06	3/8"-24UNF	19.0	134	3,750
HM-SBODY-07	7/16"-20UNF	22.0	150	5,000
HM-SBODY-08	1/2"-20UNF	25.0	165	6,800
HM-SBODY-10	5/8"-18UNF	32.0	196	10,900
HM-SBODY-12	3/4"-16UNF	38.0	227	15,900
HM-SBODY-14	7/8"-14UNF	44.0	286	21,500

TECHNICAL DATA

Body material: Forged Bronze
 Surface treatment: Polished 'ultra' chrome coating

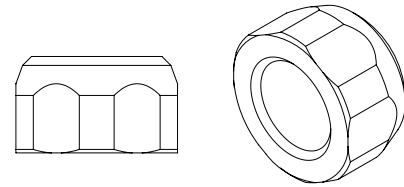


hamma® Regatta Threaded

hamma® Regatta Lock Nut

HM-NUT

HM-NUT-R RH CODE	NUT/CH-L LH CODE	THREAD
HM-NUT-04R	HM-NUT-04L	1/4"-28UNF
HM-NUT-05R	HM-NUT-05L	5/16"-24UNF
HM-NUT-06R	HM-NUT-06L	3/8"-24UNF
HM-NUT-07R	HM-NUT-07L	7/16"-20UNF
HM-NUT-08R	HM-NUT-08L	1/2"-20UNF
HM-NUT-10R	HM-NUT-10L	5/8"-18UNF
HM-NUT-12R	HM-NUT-12L	3/4"-16UNF
HM-NUT-14R	HM-NUT-14L	7/8"-14UNF
HM-NUT-16R	HM-NUT-16L	1"-12UNF
HM-NUT-18R	HM-NUT-18L	1.1/8"-12UNF
HM-NUT-20R	HM-NUT-20L	1.1/4"-12UNF



TECHNICAL DATA

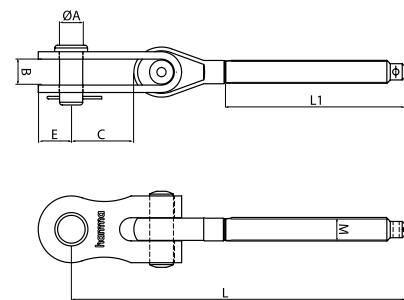
Casing material: AISI316 - DIN 1.4408
 Surface treatment: "E.P." (Electro polished)

hamma® Regatta Thread Toggle

HM-THT

HM-THT-R CODE	SIZE M (THREAD)	ØA (MM)	B (MM)	C (MM)	E (MM)	L (MM)	L1 (MM)
HM-THT-04R	1/4"-28UNF	6.35	7	21	10	108	59
HM-THT-05R	5/16"-24UNF	8	9	25	12	125	69
HM-THT-06R	3/8"-24UNF	9.5	11	29.5	14	145.5	80
HM-THT-07R	7/16"-20UNF	11	14	34	16	178	94
HM-THT-08R	1/2"-20UNF	12.7	14	34	18	181	98
HM-THT-10R	5/8"-18UNF	15.8	18	43	21	223	117
HM-THT-12R	3/4"-16UNF	19	22	45	24	259	135
HM-THT-14R	7/8"-14UNF	22.2	25	50	29	289	149
HM-THT-16R	1"-12UNF	25.4	28	58	31.5	332	168
HM-THT-18R	1.1/8"-12UNF	28.5	32	58	35	360	196
HM-THT-20R	1.1/4"-12UNF	31.75	38	77	42.5	405	224

HM-THT-L CODE	SIZE M (THREAD)	ØA (MM)	B (MM)	C (MM)	E (MM)	L (MM)	L1 (MM)
HM-THT-04L	1/4"-28UNF	6.35	7	21	10	108	59
HM-THT-05L	5/16"-24UNF	8	9	25	12	125	69
HM-THT-06L	3/8"-24UNF	9.5	11	29.5	14	145.5	80
HM-THT-07L	7/16"-20UNF	11	14	34	16	178	94
HM-THT-08L	1/2"-20UNF	12.7	14	34	18	181	98
HM-THT-10L	5/8"-18UNF	15.8	18	43	21	223	117
HM-THT-12L	3/4"-16UNF	19	22	45	24	259	135
HM-THT-14L	7/8"-14UNF	22.2	25	50	29	289	149
HM-THT-16L	1"-12UNF	25.4	28	58	31.5	332	168
HM-THT-18L	1.1/8"-12UNF	28.5	32	58	35	360	196
HM-THT-20L	1.1/4"-12UNF	31.75	38	77	42.5	405	224



TECHNICAL DATA

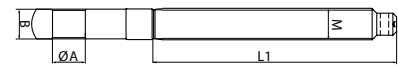
Forging material: AISI316 - DIN 1.4401
 Surface treatment: "E.P." (Electro polished)

hamma® Regatta Forged Thread Eye

HM-THE

HM-THE-R CODE	SIZE M (THREAD)	ØA (MM)	B (MM)	C (MM)	L (MM)	L1 (MM)
HM-THE-05R	5/16"-24UNF	8.5	7.2	10	90	69
HM-THE-06R	3/8"-24UNF	9.8	9	11	105	80
HM-THE-07R	7/16"-20UNF	11.5	10.2	15	129	94
HM-THE-08R	1/2"-20UNF	13.2	12	15	132	98
HM-THE-10R	5/8"-18UNF	16.5	15	18	162	117
HM-THE-12R	3/4"-16UNF	20	18	25	189	135
HM-THE-14R	7/8"-14UNF	23	21	25	214	149
HM-THE-16R	1"-12UNF	26.5	24	34	240	168
HM-THE-18R	1.1/8"-12UNF	30	24	34	268	196
HM-THE-20R	1.1/4"-12UNF	34	30	33	295	224

HM-THE-L CODE	SIZE M (THREAD)	ØA (MM)	B (MM)	C (MM)	L (MM)	L1 (MM)
HM-THE-05L	5/16"-24UNF	8.5	7.2	10	90	69
HM-THE-06L	3/8"-24UNF	9.8	9	11	105	80
HM-THE-07L	7/16"-20UNF	11.5	10.2	15	129	94
HM-THE-08L	1/2"-20UNF	13.2	12	15	132	98
HM-THE-10L	5/8"-18UNF	16.5	15	18	162	117
HM-THE-12L	3/4"-16UNF	20	18	25	189	135
HM-THE-14L	7/8"-14UNF	23	21	25	214	149
HM-THE-16L	1"-12UNF	26.5	24	34	240	168
HM-THE-18L	1.1/8"-12UNF	30	24	34	268	196
HM-THE-20L	1.1/4"-12UNF	34	30	33	295	224



TECHNICAL DATA

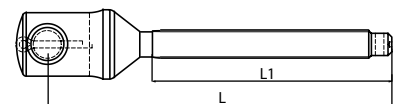
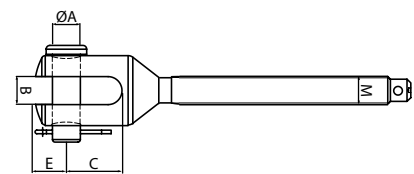
Forging material: AISI316 - DIN 1.4401
 Surface treatment: "M.F." (Matte Finished)

hamma® Regatta Machined Fork Thread

HM-THF

HM-THF-R CODE	SIZE M (THREAD)	ØA (MM)	B (MM)	C (MM)	E (MM)	L (MM)	L1 (MM)
HM-THF-05R	5/16"-24UNF	8	8	17	9.1	100	69
HM-THF-06R	3/8"-24UNF	9.5	10	20	10.5	119	80
HM-THF-07R	7/16"-20UNF	11	11	22	12	140	94
HM-THF-08R	1/2"-20UNF	12.7	13	26	14.4	152	98
HM-THF-10R	5/8"-18UNF	16	16	32	17.2	182	117
HM-THF-12R	3/4"-16UNF	19	19	38	22	216	135
HM-THF-14R	7/8"-14UNF	22	22	45	25	240	149

HM-THF-L CODE	SIZE (FOR THREAD)	ØA (MM)	B (MM)	C (MM)	E (MM)	L (MM)	L1 (MM)
HM-THF-05L	5/16"-24UNF	8	8	17	9.1	100	69
HM-THF-06L	3/8"-24UNF	9.5	10	20	10.5	119	80
HM-THF-07L	7/16"-20UNF	11	11	22	12	140	94
HM-THF-08L	1/2"-20UNF	12.7	13	26	14.4	152	98
HM-THF-10L	5/8"-18UNF	16	16	32	17.2	182	117
HM-THF-12L	3/4"-16UNF	19	19	38	22	216	135
HM-THF-14L	7/8"-14UNF	22	22	45	25	240	149



TECHNICAL DATA

Forging material: AISI316 - DIN 1.4401
 Surface treatment: "E.P." (Electro polished)

PERFORMANCE BY DESIGN

T 1800 272 879
 E SALES@ARCUSWIRE.COM



hamma[®] Regatta Left Thread Shroud Terminal

HM-THST

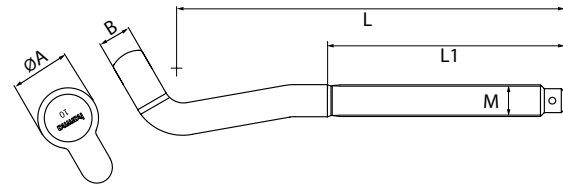
HM-THST CODE	SIZE M (THREAD)	ØA (MM)	B (MM)	L (MM)	L1 (MM)	BACKING PLATE CODE
HM-THST-05	5/16"-24UNF	23	12.5	134	69	HM-BPST-06
HM-THST-06	3/8"-24UNF	23	12.5	145	80	HM-BPST-06
HM-THST-07	7/16"-20UNF	29	13.1	164	94	HM-BPST-08
HM-THST-08S	1/2"-20UNF	29	14.5	157	80	HM-BPST-08
HM-THST-08	1/2"-20UNF	30.5	16.5	174	80	HM-BPST-10
HM-THST-10S	5/8"-18UNF	30.5	16.5	191	100	HM-BPST-10
HM-THST-10	5/8"-18UNF	33	18	200	100	HM-BPST-10
HM-THST-12S	3/4"-16UNF	33	18	219	130	HM-BPST-10
HM-THST-12	3/4"-16UNF	39	21	249	135	HM-BPST-1112
HM-THST-14	7/8"-14UNF	39	21	249	149	HM-BPST-1112



TECHNICAL DATA

Forging material: AISI316 - DIN 1.4401
 Surface treatment: "E.P." (Electro polished)

Backing Plates - Page 11



hamma[®] Regatta Left Thread Stemball Head

HM-THSB

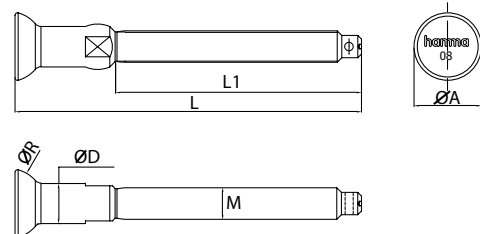
HM-THSB CODE	SIZE M (THREAD)	ØA (MM)	ØD (MM)	L (MM)	L1 (MM)	ØR (MM)
HM-THSB-05	5/16"24UNF	18.8	9	103	69	10
HM-THSB-06	3/8"24UNF	18.8	9	114	80	10
HM-THSB-07	7/16"-20UNF	21	12.5	129	94	11
HM-THSB-08S	1/2"-20UNF	21	12.5	133	98	11
HM-THSB-08	1/2"-20UNF	27	16.1	138	98	14
HM-THSB-10	5/8"-18UNF	27.7	17.8	172	117	14
HM-THSB-12	3/4"-16UNF	33.3	21.4	212	135	17
HM-THSB-14	7/8"-14UNF	33.3	21.4	222	149	17



TECHNICAL DATA

Forging material: AISI316 - DIN 1.4401
 Surface treatment: "E.P." (Electro polished)

Stemball Cups - Page 13



hamma® Regatta Left Thread T-Terminal

HM-THTT

HM-THTT CODE	SIZE M (THREAD)	ØA (MM)	B (MM)	L (MM)	L1 (MM)	BACKING PLATE CODE
HM-THTT-05S	5/16"-24UNF	20	9	110	69	HM-BPTT-04
HM-THTT-05	5/16"-24UNF	20	11	120	69	HM-BPTT-05
HM-THTT-06S	3/8"-24UNF	20	11	130	80	HM-BPTT-05
HM-THTT-06	3/8"-24UNF	28	14	140	80	HM-BPTT-0607
HM-THTT-07	7/16"-20UNF	28	14	155	94	HM-BPTT-0607
HM-THTT-08S	1/2"-20UNF	28	14	117	100	HM-BPTT-0607
HM-THTT-08	1/2"-20UNF	33	18	180	110	HM-BPTT-0810
HM-THTT-10	5/8"-18UNF	33	18	198	118	HM-BPTT-0810

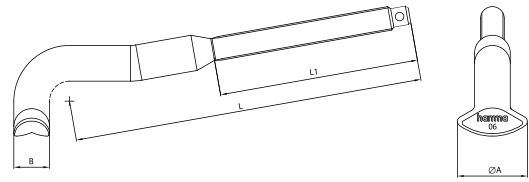


TECHNICAL DATA

Body material: Casting AISI316, EN 1.4401
 Surface treatment: "E.P." (Electro polished)

FIELD OF APPLICATION

Not guaranteed for greater than 40% of break load of 1X19 wire.



hamma[®] Regatta Swage Studs

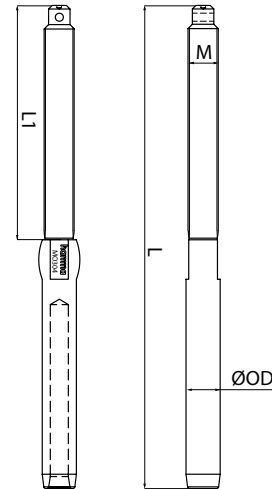
hamma[®] Regatta Left Swage Stud

HM-SWSM LEFT HAND

LEFT HAND THREAD

HM-SWSM/L CODE	SIZE (FOR CABLE)	L (MM)	L1 (MM)	M (THREAD)	ØOD (MM)	MBL* (KGF)
HM-SWSM-0304L	3	106	59	1/4"-28UNF	6.3	1,550
HM-SWSM-0404L	4	120	59	1/4"-28UNF	7.5	1,800
HM-SWSM-0405L	4	130	69	5/16"-24UNF	7.5	2,400
HM-SWSM-0505L	5	148	69	5/16"-24UNF	9	2,600
HM-SWSM-0506L	5	160	80	3/8"-24UNF	9	3,600
HM-SWSM-0606L	6	170	80	3/8"-24UNF	12.5	3,700
HM-SWSM-0607L	6	190	94	7/16"-20UNF	12.5	5,000
HM-SWSM-0608L	6	190	98	1/2"-20UNF	12.5	6,800
HM-SWSM-0707L	7	200	94	7/16"-20UNF	14.3	5,000
HM-SWSM-0708L	7	202	98	1/2"-20UNF	14.3	6,800
HM-SWSM-0808L	8	216	98	1/2"-20UNF	16.1	6,800
HM-SWSM-0810L	8	234	117	5/8"-48UNF	16.1	10,900
HM-SWSM-0910L	9	248	117	5/8"-18UNF	17.8	10,900
HM-SWSM-1010L	10	260	117	5/8"-18UNF	17.8	10,900
HM-SWSM-1012L	10	278	135	3/4"-16UNF	17.8	15,900
HM-SWSM-1212L	12	305	135	3/4"-16UNF	21.4	15,900
HM-SWSM-1214L	12	320	149	7/8"-14UNF	21.4	21,500
HM-SWSM-1414L	14	345	149	7/8"-14UNF	25	21,500
HM-SWSM-1616L	16	390	168	1"-12UNF	28.1	28,300
HM-SWSM-1918L	19	462	196	1-1/8"-12UNF	34.5	32,000
HM-SWSM-2220L	22	534	224	1-1/4"-12UNF	40.21	40,500

HM-SWS/L CODE	SIZE (FOR CABLE)	L (MM)	L1 (MM)	M (THREAD)	ØOD (MM)	MBL* (KGF)
HM-SWS-0404L	1/8"	106	59	1/4"-28UNF	6.3	1,550
HM-SWS-0605L	3/16"	148	69	5/16"-24UNF	9	2,600
HW-SWS-0606L	3/16"	160	80	3/8"-24UNF	9	3,700
HM-SWS-0807L	1/4"	170	80	7/16"-20UNF	12.5	5,000
HM-SWS-0808L	1/4"	194	98	1/2"-20UNF	12.5	6,800
HM-SWS-0908L	9/32"	205	98	1/2"-20UNF	14.3	6,800
HM-SWS-1210L	3/8"	255	117	5/8"-18UNF	17.8	10,900
HM-SWS-1412L	7/16"	295	135	3/4"-16UNF	19.8	15,900
HM-SWS-1614L	1/2"	323	149	7/8"-14UNF	21.4	21,500



TECHNICAL DATA

Forging material: AISI316 - DIN 1.4401
 Surface treatment: "M.F." (Matte finished)



Lock Nuts - See page 14

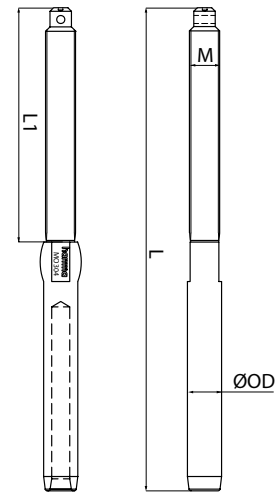
hamma® Regatta Swage Stud

HM-SWSM Right Hand

RIGHT HAND THREAD

HM-SWSM/R CODE	SIZE (FOR CABLE)	L (MM)	L1 (MM)	M (THREAD)	ØOD (MM)	MBL* (KGF)
HM-SWSM-0304R	3	106	59	1/4"-28UNF	6.3	1,550
HM-SWSM-0404R	4	120	59	1/4"-28UNF	7.5	1,800
HM-SWSM-0405R	4	130	69	5/16"-24UNF	7.5	2,400
HM-SWSM-0505R	5	148	69	5/16"-24UNF	9	2,600
HM-SWSM-0506R	5	160	80	3/8"-24UNF	9	3,600
HM-SWSM-0606R	6	170	80	3/8"-24UNF	12.5	3,700
HM-SWSM-0607R	6	190	94	7/16"-20UNF	12.5	5,000
HM-SWSM-0608R	6	190	98	1/2"-20UNF	12.5	6,800
HM-SWSM-0707R	7	200	94	7/16"-20UNF	14.3	5,000
HM-SWSM-0708R	7	202	98	1/2"-20UNF	14.3	6,800
HM-SWSM-0808R	8	216	98	1/2"-20UNF	16.1	6,800
HM-SWSM-0810R	8	234	117	5/8"-48UNF	16.1	10,900
HM-SWSM-0910R	9	248	117	5/8"-18UNF	17.8	10,900
HM-SWSM-1010R	10	260	117	5/8"-18UNF	17.8	10,900
HM-SWSM-1012R	10	278	135	3/4"-16UNF	17.8	15,900
HM-SWSM-1112R	11	295	135	3/4"-16UNF	19.8	15,900
HM-SWSM-1212R	12	305	135	3/4"-16UNF	21.4	15,900
HM-SWSM-1214R	12	320	149	7/8"-14UNF	21.4	21,500
HM-SWSM-1414R	14	345	149	7/8"-14UNF	25	21,500
HM-SWSM-1616R	16	390	168	1"-12UNF	28.1	28,300
HM-SWSM-1918R	19	462	196	1-1/8"-12UNF	34.5	32,000
HM-SWSM-1920R	19	534	224	1-1/4"-12UNF	31.5	32,000
HM-SWSM-2220R	22	534	224	1-1/4"-12UNF	40.21	40,500

HM-SWS/R CODE	SIZE (FOR CABLE)	L (MM)	L1 (MM)	M (THREAD)	ØOD (MM)	MBL* (KGF)
HM-SWS-0404R	1/8"	106	59	1/4"-28UNF	6.3	1,550
HM-SWS-0605R	3/16"	148	69	5/16"-24UNF	9	2,600
HW-SWS-0606R	3/16"	160	80	3/8"-24UNF	9	3,700
HW-SWS-0706R	7/32"	160	80	3/8"-24UNF	9	3,600
HM-SWS-0807R	1/4"	170	80	7/16"-20UNF	12.5	5,000
HM-SWS-0808R	1/4"	194	98	1/2"-20UNF	12.5	6,800
HM-SWS-0908R	9/32"	205	98	1/2"-20UNF	14.3	6,800
HM-SWS-1210R	3/8"	255	117	5/8"-18UNF	17.8	10,900
HM-SWS-1412R	7/16"	295	135	3/4"-16UNF	19.8	15,900
HM-SWS-1614R	1/2"	323	149	7/8"-14UNF	21.4	21,500



TECHNICAL DATA

Forging material: AISI316 - DIN 1.4401
 Surface treatment: "M.F." (Matte finished)



Lock Nuts - See page 14

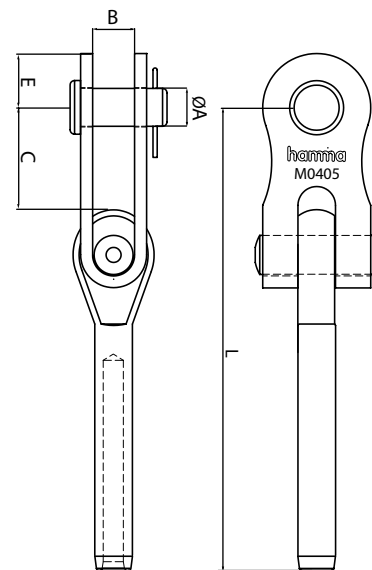
hamma[®] Regatta Swage Toggle

hamma[®] Regatta Toggle Terminal

HM-SWTM

HM-SWTM CODE	SIZE (FOR CABLE)	ØA (PIN)	B (MM)	C (MM)	E (MM)	L (MM)	MBL* (KGF)
HM-SWTM-0405	4	5/16"	9	25	12	105	2,400
HM-SWTM-0505	5	5/16"	9	24	12	115	2,400
HM-SWTM-0506	5	3/8"	11	29.5	14	123.5	3,600
HM-SWTM-0606	6	3/8"	11	28	14	134.5	3,600
HM-SWTM-0607	6	7/16"	14	34	16	150	5,000
HM-SWTM-0608	6	1/2"	14	34	18	150	6,800
HM-SWTM-0707	7	7/16"	14	33	16	162	5,000
HM-SWTM-0708	7	1/2"	14	33	18	162	6,800
HM-SWTM-0808	8	1/2"	14	33	18	176	6,800
HM-SWTM-0810	8	5/8"	18	43	21	194	10,900
HM-SWTM-0910	9	5/8"	18	43	21	207	10,900
HM-SWTM-1010	10	5/8"	18	43	21	220	10,900
HM-SWTM-1012	10	3/4"	22	45	24	235	15,900
HM-SWTM-1212	12	3/4"	22	45	24	262	15,900
HM-SWTM-1214	12	7/8"	25	50	29	274	21,500
HM-SWTM-1414	14	7/8"	25	50	29	297	21,500
HM-SWTM-1616	16	1"	28	58	31.5	344	28,300
HM-SWTM-1918	19	1.1/8"	32	58	35	373	32,000
HM-SWTM-2220	22	1.1/4"	38	77	42.5	437	40,500

HM-SWT CODE	SIZE (FOR CABLE)	ØA (PIN)	B (MM)	C (MM)	E (MM)	L (MM)	MBL* (KGF)
HM-SWT-0605	3/16"	5/16"	9	24	12	113	2,400
HM-SWT-0606	3/16"	3/8"	11	29.5	14	121.5	3,600
HM-SWT-0706	7/32"	3/8"	11	28	14	137.5	3,600
HM-SWT-0807	1/4"	7/16"	14	34	16	154	5,000
HM-SWT-0808	1/4"	1/2"	14	34	18	154	6,800
HM-SWT-0908	9/32"	1/2"	14	33	18	165	6,800
HM-SWT-1210	3/8"	5/8"	18	43	21	215	10,900
HM-SWT-1412	7/16"	3/4"	22	45	24	253	15,900
HM-SWT-1614	1/2"	7/8"	25	50	29	282	21,500



TECHNICAL DATA

Forging material: AISI316 - DIN 1.4401
Surface treatment: "E.P." (Electro polished)

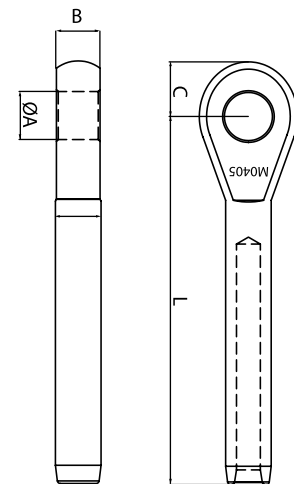
hamma[®] Regatta Swage Eyes

hamma[®] Regatta Eye Terminal

HM-SWEM

HM-SWEM CODE	SIZE (FOR CABLE)	ØA (MM)	B (MM)	C (MM)	L (MM)	SUIT PIN
HM-SWEM-0405	4	8.5	7.2	10	70	5/16"
HM-SWEM-0505	5	8.5	7.2	11	80	5/16"
HM-SWEM-0506	5	9.8	9	11	83	3/8"
HM-SWEM-0606	6	9.8	9	12.5	94	3/8"
HM-SWEM-0607	6	11.5	10.2	15	101	7/16"
HM-SWEM-0608	6	13.2	12	15	101	1/2"
HM-SWEM-0707	7	11.5	12	16	113	7/16"
HM-SWEM-0708	7	13.2	12	16	113	1/2"
HM-SWEM-0808	8	13.2	12	16	127	1/2"
HM-SWEM-0810	8	16.5	15	18	133	5/8"
HM-SWEM-0910	9	16.5	15	18	146	5/8"
HM-SWEM-1010	10	16.5	15	18	159	5/8"
HM-SWEM-1012	10	20	18	25	165	3/4"
HM-SWEM-1112	11	20	18	25	183	3/4"
HM-SWEM-1212	12	20	18	25	192	3/4"
HM-SWEM-1214	12	23	21	25	199	7/8"
HM-SWEM-1414	14	23	21	25	222	7/8"
HM-SWEM-1616	16	26.5	24	34	252	1"
HM-SWEM-1918	19	30	24	34	281	1.1/8"
HM-SWEM-2220	22	35	30	33	327	1.1/4"

HM-SWE CODE	SIZE (FOR CABLE)	ØA (MM)	B (MM)	C (MM)	L (MM)	SUIT PIN
HM-SWE-0505	5/32"	8.5	7.2	10	70	5/16"
HM-SWE-0605	3/16"	8.5	7.2	11	78	5/16"
HM-SWE-0606	3/16"	9.8	9	11	81	3/8"
HM-SWE-0706	7/32"	9.8	9	12.5	97	3/8"
HM-SWE-0807	1/4"	11.5	10.2	15	105	7/16"
HM-SWE-0808	1/4"	13.2	12	15	105	1/2"
HM-SWE-0908	9/32"	13.2	12	16	116	1/2"
HM-SWE-1008	5/16"	13.2	12	16	127	1/2"
HM-SWE-1010	5/16"	16.5	15	18	133	5/8"
HM-SWE-1210	3/8"	16.5	15	18	154	5/8"
HM-SWE-1412	7/16"	20	18	25	183	3/4"
HM-SWE-1614	1/2"	23	21	25	207	7/8"



TECHNICAL DATA

Forging material: AISI316 - DIN 1.4401
 Surface treatment: "M.F." (Matte finished)

hamma® Regatta Hardware

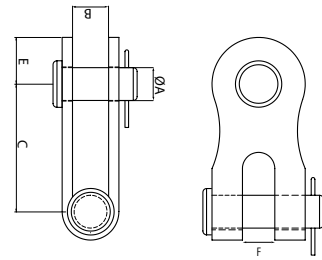
hamma® Regatta Double Jaw Toggle Plate

HM-DJTP

HM-DJTP CODE	SIZE PIN (INCH)	ØA (MM)	B (MM)	C (MM)	E (MM)	F (MM)	MBL (KFG)
HM-DJTP-05	5/16"	8	9	35	12	7.5	2,400
HM-DJTP-06	3/8"	9.5	11	40.5	14	9.7	3,600
HM-DJTP-07	7/16"	11	14	49	16	10.8	5,000
HM-DJTP-08	1/2"	12.7	14	49	18	12.6	6,800
HM-DJTP-10	5/8"	15.8	18	61	21	15.7	10,900
HM-DJTP-12	3/4"	19	22	70	24	18.7	15,900
HM-DJTP-14	7/8"	22.2	25	75	29	22.4	21,500
HM-DJTP-16	1"	25.4	28	92	31.5	26	28,300
HM-DJTP-18	1.1/8"	28.5	32	92	35	28	32,000
HM-DJTP-20	1.1/4"	31.75	38	110	42.5	32	40,500

TECHNICAL DATA

Sheet material: AISI316 - DIN 1.4401
 Surface treatment: "E.P." (Electro polished)



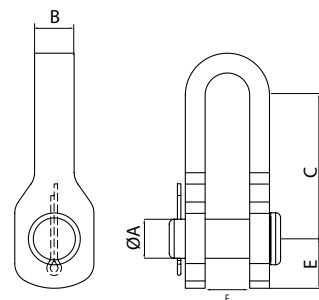
hamma® Regatta Eye Jaw Toggle

HM-EJT

HM-EJT CODE	SIZE PIN (INCH)	ØA (MM)	B (MM)	C (MM)	E (MM)	F (MM)	MBL (KFG)
HM-EJT-07	7/16"	11	13	50	15	12	5,000
HM-EJT-08	1/2"	12.7	15	53	19	14	6,800
HM-EJT-10	5/8"	15.8	16	58	20	19	10,900
HM-EJT-12	3/4"	19	19	76.5	25	22	15,900
HM-EJT-14	7/8"	22.2	22	85	30	24	21,500
HM-EJT-16	1"	25.4	25	96.5	30	27	28,300

TECHNICAL DATA

Sheet material: AISI316 - DIN 1.4401
 Surface treatment: "E.P." (Electro polished)



hamma® Regatta Extended Toggle Terminal

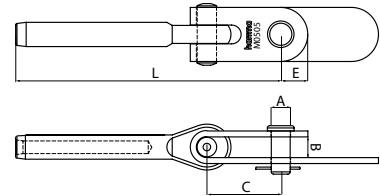
HM-TEXM

HM-TEXM CODE	SIZE C (FOR CABLE)	A (PIN)	B (MM)	C (MM)	E (MM)	L (MM)
HM-TEXM-0505	5	5/16"	9	35	12	115
HM-TEXM-0606	6	3/8"	11	40.5	14	134.5
HM-TEXM-0708	7	1/2"	14	49	18	162
HM-TEXM-0808	8	1/2"	14	49	18	176
HM-TEXM-0810	8	5/8"	18	61	21	194
HM-TEXM-1010	10	5/8"	18	61	21	220
HM-TEXM-1212	12	3/4"	22	70	24	262
HM-TEXM-1412	14	3/4"	22	75	29	297



TECHNICAL DATA

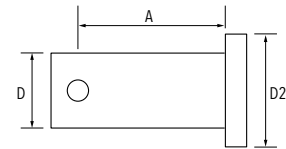
Forging material: AISI316 - DIN 1.4401
 Surface treatment: "E.P." (Electro polished)



hamma® Regatta Clevis Pins

HM-CP

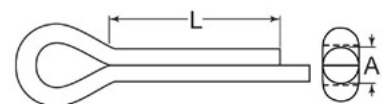
HM-CP CODE	SIZE (INCH)	A (MM)	D (MM)	D2 (MM)
HM-CP-05	5/16"	14	7.8	12
HM-CP-06	3/8"	18	9.4	14
HM-CP-07	7/16"	23	10.8	16
HM-CP-08	1/2"	23	12.6	18
HM-CP-10	5/8"	30	15.7	20
HM-CP-12	3/4"	34	18.9	24
HM-CP-14	7/8"	43	22	27.2
HM-CP-16	1"	42	25	31
HM-CP-18	1 1/8"	73	28.4	33



hamma® Regatta Split Pins

HM-Split

HM-SPLIT CODE	A (MM)	L (MM)	GRADE
HM-SPLIT-2520	2.5	20	316
HM-SPLIT-3232	3.2	32	316
HM-SPLIT-0440	4.0	40	316
HM-SPLIT-1620	1.6	20	316

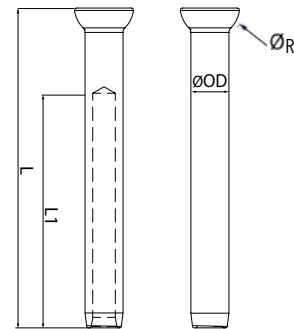


hamma[®] Regatta Stemballs/Cups

hamma[®] Regatta Stemball Head Swage

HM-SWSB

HM-SWSB CODE	SIZE (FOR CABLE)	ØA (MM)	L (MM)	L1 (MM)	ØOD (MM)	ØR (MM)
HM-SWSB-03	3	13.4	50	33	6.3	7
HM-SWSB-04	4	16.3	66	44	7.5	9
HM-SWSB-05	5	18.8	80	55	9.1	10
HM-SWSB-06	6	21	94	66	12.5	11
HM-SWSB-07	7	21.5	103	77	14.3	11
HM-SWSB-08	8	27	122	88	16.1	14
HM-SWSB-10	10	27.7	150	110	17.8	14
HM-SWSB-11	11	27.7	170	123	19.8	14
HM-SWSB-12	12	33.3	183	132	21.4	17
HM-SWSB-14	14	32.5	216	154	25	17
HM-SWSB-16	16	39.4	244	176	28.1	20
HM-SWSB-Z CODE	SIZE (CABLE)	ØA (MM)	L (MM)	L1 (MM)	ØD (MM)	ØR (MM)
HM-SWSB-05Z	5	14.4	80	55	9.1	7.2
HM-SWSB-07Z	7	26	103	77	14.2	13



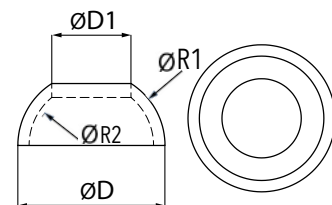
TECHNICAL DATA

Forging material: AISI316 - DIN 1.4401
 Surface treatment: "E.P." (Electro polished)

hamma[®] Regatta Stemball Cup

HM-CUP




HM-CUP CODE	SIZE ØD1 (MM)	ØD (MM)	ØR1 (MM)	ØR2 (MM)
HM-CUP-0818	8.0	18	9	7
HM-CUP-0926	9.0	26	13	11
HM-CUP-11226	11.2	26	13	11
HM-CUP-12526	12.5	26	13	11
HM-CUP-1426	14.0	26	13	11
HM-CUP-1626	16.0	26	13	11
HM-CUP-2034	20.0	34	17	14



TECHNICAL DATA

Casting: AISI316 - DIN 1.4401
 Surface treatment: "E.P." (Electro polished)

MATCH TABLE

		Connect with	
SIZE CABLE	HM-SWSB CODE	SIZE	HM-CUP CODE
3MM	HM-SWSB-03	8.0	HM-CUP-0818
4MM (5/32")	HM-SWSB-04	9.0	HM-CUP-0926
5MM	HM-SWSB-05	11.2	HM-CUP-11226
6MM	HM-SWSB-06	14.0	HM-CUP-1426
7MM	HM-SWSB-07	16.0	HM-CUP-1626
8MM (5/16")	HM-SWSB-08	20	HM-CUP-2034
10MM	HM-SWSB-10		

Swage Tolerance Guide

WIRE Ø IN / MM	BEFORE SWAGE Ø MM	AFTER SWAGE Ø MM	TOLERANCE
1/16	4.00	3.50	+0.00 -0.12
1.5mm	4.00	3.50	
3/32	5.54	4.82	
2.5mm	5.54	4.82	
1/8	6.35	5.56	
3mm	6.35	5.56	
5/32	7.54	6.35	
4mm	7.54	6.35	
3/16	9.12	7.92	
5mm	9.12	7.92	
7/32	10.84	9.52	+0.00 -0.18
1/4	12.55	11.12	
6mm	12.55	11.12	
9/32	14.30	11.12	
7mm	14.30	12.70	
5/16	16.13	12.70	
8mm	16.13	14.30	
9mm	17.85	14.30	
3/8	17.85	15.87	
10mm	17.85	15.87	
7/16	19.84	17.47	+0.00 -0.25
11mm	19.84	17.47	
12mm	21.44	19.05	
1/2	21.44	19.05	
14mm	25.00	22.22	
9/16	25.00	22.22	
5/8	28.17	25.40	
16mm	28.17	25.40	
3/4	34.52	31.75	
19mm	34.52	31.75	





hamma[®] Regatta Shroud Terminals

hamma[®] Regatta Shroud Terminal

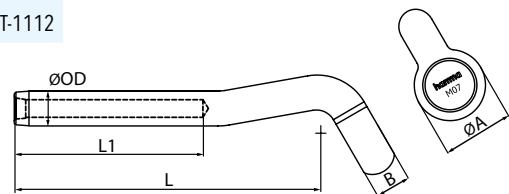
HM-SWST

HM-SWST CODE	SIZE C (FOR CABLE)	ØA (MM)	B (MM)	L (MM)	L1 (MM)	ØOD (MM)	BACKING PLATE CODE
HM-SWST-04	4	18	9	84	44	7.5	HM-BPST-0405
HM-SWST-05	5	18	9	93	55	9	HM-BPST-0405
HM-SWST-06	6	23	12.5	112	66	12.5	HM-BPST-06
HM-SWST-07	7	29	14.5	123	77	14.3	HM-BPST-07
HM-SWST-08	8	30.5	16.5	152	88	16.1	HM-BPST-08
HM-SWST-10	10	33	18	178	110	17.8	HM-BPST-10
HM-SWST-11	11	39	21	220	123	19.8	HM-BPST-1112
HM-SWST-12	12	39	21	220	132	21.4	HM-BPST-1112



TECHNICAL DATA

Forging material: AISI316 - DIN 1.4401
 Surface treatment: "E.P." (Electro polished)



hamma[®] Regatta Shroud Terminal Backing Plate

HM-BPST

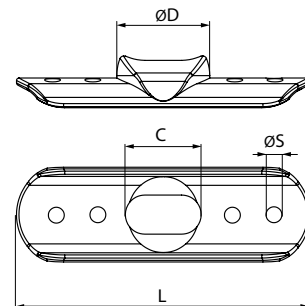
HM-BPST CODE	SIZE	C (MM)	D (MM)	L (MM)	ØS (MM)	TERMINAL
HM-BPST-0405	19	19	25	88	5.2	4.0-5.0mm
HM-BPST-06	24	24	30	95	6.5	6mm
HM-BPST-07	31	31	38	120	6.5	7mm
HM-BPST-08	32	32	39.5	120	6.5	8mm
HM-BPST-10	34	34	43.5	150	6.5	10mm
HM-BPST-1112	40	40	50	176	6.5	11-12mm



BPST-0405

TECHNICAL DATA

Casting: AISI316 - DIN 1.4401
 Surface treatment: "E.P." (Electro polished)



hamma[®] Regatta Swage T-Terminals

hamma[®] Regatta T-Terminal

HM-SWTT

HM-SWTT CODE	SIZE (CABLE)	A (MM)	B (MM)	ØD (MM)	L1 (MM)	BACKING PLATE CODE
HM-SWTT-02	2.0	15	6.35	6.2	33	HM-BPTT-0235
HM-SWTT-025	2.5	15	6.35	6.3	33	HM-BPTT-0235
HM-SWTT-03	3.0	15	6.35	6.3	33	HM-BPTT-0235
HM-SWTT-035	3.5	15	6.35	6.3	38	HM-BPTT-0235
HM-SWTT-04	4	20	9.0	9.0	44	HM-BPTT-04
HM-SWTT-05	5	20	11	11.0	55	HM-BPTT-05
HM-SWTT-06	6	28	14.3	14.3	66	HM-BPTT-0607
HM-SWTT-07	7	28	14.3	14.3	77	HM-BPTT-0607
HM-SWTT-08	8	33	18	17.8	88	HM-BPTT-0810
HM-SWTT-10	10	33	18	17.8	110	HM-BPTT-0810

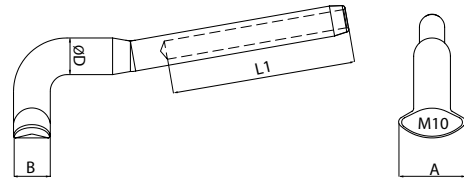


TECHNICAL DATA

Body material: Casting AISI316, EN 1.4401
 Surface treatment: "M.P." (Machine Polished)

FIELD OF APPLICATION

Not guaranteed for greater than 40% of break load of 1X19 wire.



hamma[®] Regatta T-Terminal - XS

HM-SWTX

HM-SWTX CODE	SIZE (CABLE)	A (MM)	B (MM)	ØD (MM)	L1 (MM)	BACKING PLATE CODE
HM-SWTX-02	2.0	13.5	6.0	6.4	35	HM-BPTT-0235
HM-SWTX-025	2.5	13.5	6.0	6.4	35	HM-BPTT-0235
HM-SWTX-03	3.0	13.5	6.0	6.4	35	HM-BPTT-0235
HM-SWTX-035	3.5	13.5	6.0	6.4	35	HM-BPTT-0235

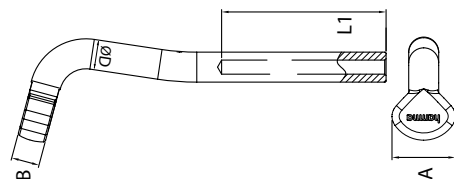


TECHNICAL DATA

Body material: Casting AISI316, EN 1.4401
 Surface treatment: "M.P." (Machine Polished)

FIELD OF APPLICATION

Xtra long shank for use with thick wall carbon or composite dinghy and skiff masts



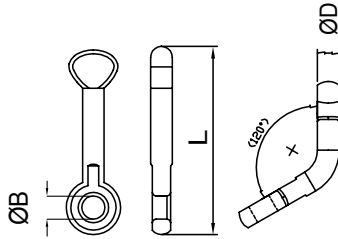
hamma® Regatta T-Terminal Eye

HM-TTE

HM-TTE CODE	SIZE (MM)	ØB (MM)	ØD (MM)	L (MM)	BACKING PLATE CODE
HM-TTE-6MM	6	6.4	6	46.7	HM-BPTT-0235

TECHNICAL DATA

Forging material: AISI316 - DIN 1.4401
 Surface treatment: "E.P." (Electro polished)
 Fits Backing Plate - HM-BPTT-0235



hamma® Regatta T-Terminal Backing Plate

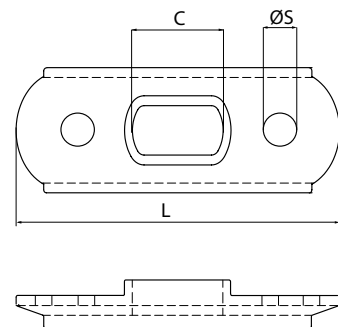
HM-BPTT

HM-BPTT CODE	SIZE (MM)	C (MM)	L (MM)	ØS (MM)	TERMINAL
HM-BPTT-0235	7MM*12.8MM	12.8	51	5	2.0-3.5mm
HM-BPTT-04	9.5MM*26MM	26	88	5.2	4.0mm
HM-BPTT-05	13MM*23MM	23	68	6.5	5.0mm
HM-BPTT-0607	15MM*34.5MM	34.5	123	6.3	6-7mm
HM-BPTT-0810	19MM*36MM	41	152	6.0	8-10mm

HM-BPTT-0607 suits terminal 6-7mm
 BPTT-0810 suits terminal 8-10mm

TECHNICAL DATA

Casting material: AISI316 - DIN 1.4408
 Forging material: AISI316 - DIN 1.4401
 Production: SF8282S - Terminal Plate - Forged
 Surface treatment: "M.P." (Machine polished)

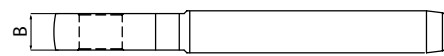
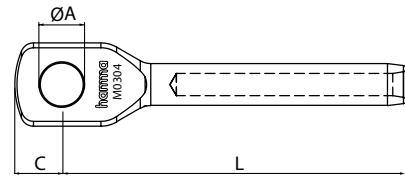


hamma® Regatta Machined Terminals

hamma® Regatta Machined Eye Terminal

HM-SMEM

HM-SMEM CODE	SIZE (FOR CABLE)	ØA (MM)	B (MM)	C (MM)	L (MM)
HM-SMEM-0304	3	6.8	5.8	8	52
HM-SMEM-0405	4	8.5	6.8	10	65
HM-SMEM-0505	5	8.5	6.8	10	80
HM-SMEM-0506	5	9.8	6.8	10	80
HM-SMEM-0606	6	9.8	9.5	12	98
HM-SMEM-0607	6	11.5	9.5	14	98
HM-SMEM-0708	7	13.2	12	15	112
HM-SMEM-0808	8	13.2	12	15	125
HM-SMEM-0810	8	16.5	14	18	132
HM-SMEM-1010	10	16.5	14	18	158
HM-SMEM-1112	11	20	18	21	179
HM-SMEM-1212	12	20	18	21	189
HM-SMEM-1414	14	23	21.5	25	220
HM-SMEM-1616	16	26.5	23	28	250
HM-SMEM-1918	19	30	26	30	295
HM-SMEM-2222	22	33	31	38	336



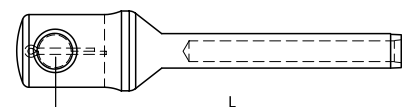
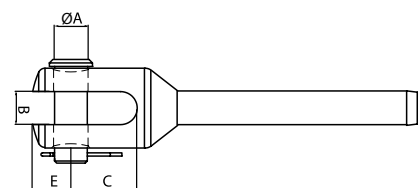
TECHNICAL DATA

Forging material: AISI316 - DIN 1.4401
 Surface treatment: "M.F." (Matte finished)

hamma® Regatta Machined Fork Terminal

HM-SMFM

HM-SMFM CODE	SIZE (FOR CABLE)	ØA (MM)	B (MM)	C (MM)	E (MM)	L (MM)
HM-SMFM-0405	4	8	8	17	9.1	78
HM-SMFM-0505	5	8	8	17	9.1	89
HM-SMFM-0506	5	9.5	10	20	10.5	100
HM-SMFM-0606	6	9.5	10	20	10.5	110
HM-SMFM-0607	6	11	11	22	12	115
HM-SMFM-0708	7	12.7	13	26	14.4	135
HM-SMFM-0808	8	12.7	13	26	14.4	145
HM-SMFM-0810	8	16	16	32	17.2	157
HM-SMFM-1010	10	16	16	32	17.2	182
HM-SMFM-1112	11	19	19	38	22	218
HM-SMFM-1212	12	19	19	38	22	218
HM-SMFM-1414	14	22	22	45	25	250
HM-SMFM-1616	16	25	25	50	28.3	284
HM-SMFM-1918	19	28	28.5	58	30.9	325
HM-SMFM-2222	22	32	32	65	34.9	375
HM-SMFM-2626	26	35	35	70	40	430



TECHNICAL DATA

Forging material: AISI316 - DIN 1.4401
 Surface treatment: "E.P." (Electro polished)

hamma[®] Regatta Swage Eyes/Forks

hamma[®] Regatta Narrow Eye Terminal

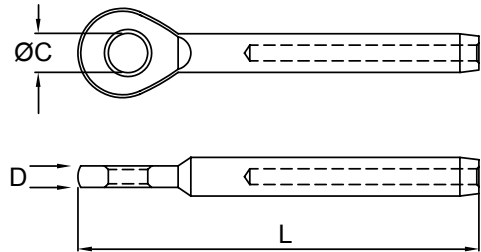
HM-SWNE

HM-SWNE CODE	SIZE (CABLE)	ØC (MM)	D (MM)	L (MM)	B.L.(1) (KGS)
HM-SWNE-02	2.0	5.5	5.5	56	850
HM-SWNE-025	2.5	5.5	5.5	56	850
HM-SWNE-03	3.0	6.5	6.3	62	1,000
HM-SWNE-04	4.0	8.5	7.5	77	1,350
HM-SWNE-05	5.0	10.5	9.1	87	2,500



TECHNICAL DATA

Forging material: AISI316 - DIN 1.4401
 Production: SF7802 - Eye - Forged
 Surface treatment: "M.F." (Matte finished)



hamma[®] Regatta Low Profile Swage Fork

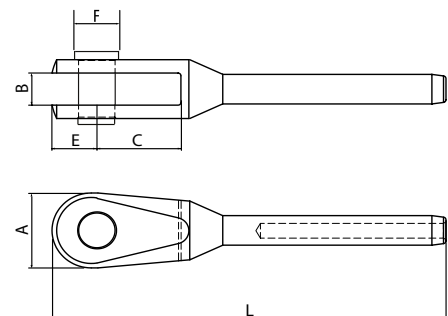
HM-SWLF

HM-SWLF CODE	SIZE (CABLE)	A (MM)	B (MM)	C (MM)	E (MM)	L (MM)	F PIN
HM-SWLF-025	2.5	14	6.4	15	8	70	5.5
HM-SWLF-03	3	14	6.4	15	8	70	6.4



TECHNICAL DATA

Forging material: AISI316 - DIN 1.4401
 Surface treatment: "M.F." (Matte finished)



SeaRig

Ball Tang Swage

BTSM

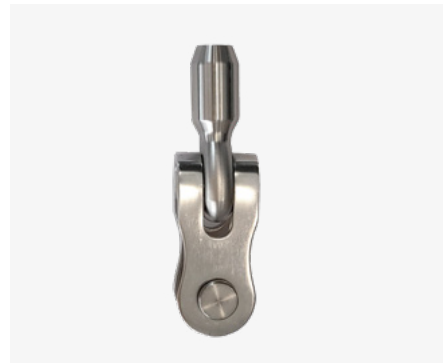
CODE	SIZE (FOR CABLE)	A (MM)	B (MM)	H (UNF)
BTSM04	4	110	62	1/2
BTSM05	5	110	52	1/2
BTSM06	6	122	46	1/2
BTSM07	7	132	50	1/2
BTSM08	8	142	52	5/8
BTSM09	9	169	52	5/8
BTSM10	10	169	52	5/8
BTSM11	11	200	59	3/4
BTSM12	12	2235	74	7/8
BTSM14	14	230	67	7/8
BTSM16	16	281	69	1
BTSM19	19	305	66	1 1/4



Internal Threaded Toggle

INTHT

CODE	SUIT WIRE DIA	A (MM)	B (MM)	C (MM)	D (MM)	E (UNF)	F (MM)	H (UNF)	I (MM)	J (MM)
INTHT08	5,6,7	140	20	30	93	1/2	18	1/2	12.7	38
INTHT10	8,9,10	175	26	50	113	5/8	22	5/8	16	45
INTHT12	11	180	26	50	113	3/4	27	3/4	19	45
INTHT14	12,14	205	32	55	127	7/8	31	7/8	22.2	55



Internal Threaded Toggle

INTHE

CODE	SUIT WIRE DIA	A (MM)	B (MM)	C (MM)	E (UNF)	F (MM)	G (MM)	H (UNF)	I (MM)	J (MM)
INTHE08	5,6,7	90	14	22	1/2	18	27	1/2	12.7	38
INTHE10	8,9,10	96	19	27	5/8	22	35	5/8	16	45
INTHE12	11	110	22	29	3/4	27	41	3/4	19	45
INTHE1412	12,14	120	26	31	3/4	31	45	7/8	19	45
INTHE14	12,14	120	26	31	7/8	31	45	7/8	22.2	55



Aerial Insulators

AIB

CODE	SUIT WIRE DIA	A (MM)	B (MM)	C (MM)	E (UNF)
AIB08	5,6,7	38	165	207	1/2
AIB10	8,10	48	198	265	5/8
AIB12	11	50	229	289	3/4
AIB14	12,14	54	240	315	7/8



Ball Tang Base

BTB

CODE	SUIT WIRE DIA	A (MM)	B (MM)	C (MM)	D (MM)	E (MM)	F (MM)	G (MM)	H (UNF)	I (MM)	J (DEG)
BTB08	5,6,7	98	83	30	19	4.8	22	32	1/2	5	32
BTB10	8,9,10	99	87	37	20	6.4	28	40	5/8	5	36
BTB12	11	150	135	42	28	5.3	35	45	7/8	6	42
BTB14	12,14	145	120	46	26	6	42	55	7/8	6	42



CODE	L (MM)	M (DEG)	N (MM)	O (MM)	BL (KGF)
BTB08	2.4	5	49	49	5120
BTB10	4.2	5	49	49	9935
BTB12	7	5	80	68	12591
BTB14	14	5	73	72	20693

hamma® Industrial Life Line Fittings

hamma® Regatta Pelican Hook with Stud Terminal

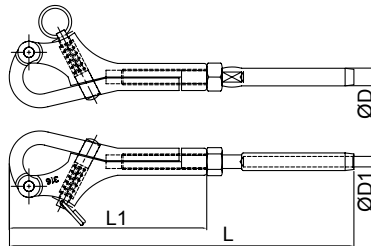
HM-S2831/S7801

CODE	SIZE (CABLE/THREAD)	ØD (MM)	ØD1 (MM)	L (MM)	L1 (MM)	B.L. (KGF)
HM-6283-1414	4mm*M8	7.54	4.3	168	100	1,500
HM-6283-1514	5mm*M8	9.08	5.3	176	100	1,500

TECHNICAL DATA

Casting material: AISI316 - DIN 1.4408
 Forging material: AISI316 - DIN 1.4401
 Production: S2831-I4
 S2831 - Hook - Cast

Terminal - Forged Terminal
 Surface treatment: "E.P." (Electro polished)



hamma® Regatta Pelican Hook

HM-S2831

CODE	SIZE (MM)	L (MM)	M (MM)	O (MM)	B.L. (KGS)
HM-6283-1008	M8	100	M8	16	1,500

TECHNICAL DATA

Casting material: AISI316 - DIN 1.4408
 Forging material: AISI316 - DIN 1.4401
 Production: S2831 - Hook - Cast
 Surface treatment: "E.P." (Electro polished)

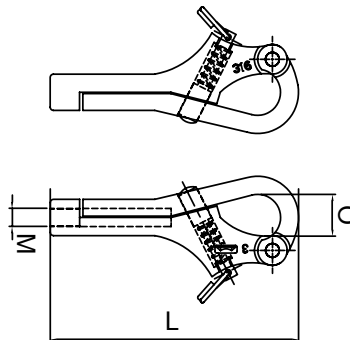


Photo courtesy Southport Yacht Club

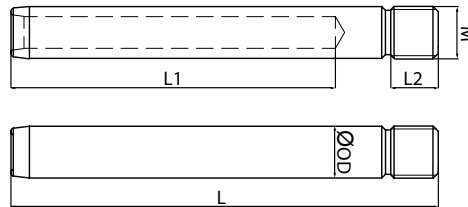
hamma® Regatta Short Swage Stud

HM-SF7801

HM-2780 CODE	SIZE (CABLE)	L (MM)	L1 (MM)	L2 (MM)	M (THREAD)	ØOD (MM)
HM-2780-1645	4	70	44	12	M8	7.5
HM-2780-1644	5	82	55	12	M8	9.1

TECHNICAL DATA

Forging material: AISI316 - DIN 1.4401
 Production: SF7801- Stud - Forged
 Surface treatment: "M.F." (Matte finished)



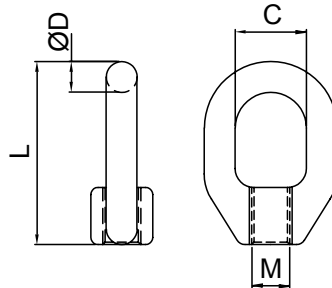
hamma® Regatta Gate Eye

HM-6306

HM-6306 CODE	SIZE (MM/INCH)	C (MM)	ØD (MM)	L (MM)	M (THREAD)
HM-6306-2108	8	15	6.5	37.5	M8
HM-6306-2536	5/16"UNF	15	6.5	37.5	5/16"UNF

TECHNICAL DATA

Casting material: AISI316 - DIN 1.4408
 Production: S3062/E1 - Swivel - Cast
 Surface treatment: "E.P." (Electro polished)



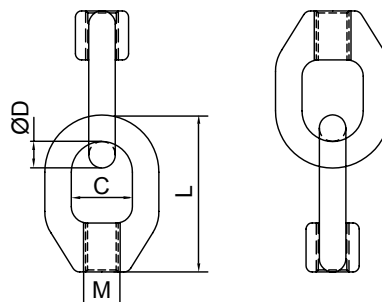
hamma® Regatta Interlocking Gate Eye

HM-S3062/E2

HM-S3062/E2 CODE	SIZE (MM/INCH)	C (MM)	ØD (MM)	L (MM)	M (THREAD)
HM-6306-2208	8	15	6.5	37.5	M8
HM-6306-2526	5/16"UNF	15	6.5	37.5	5/16"UNF

TECHNICAL DATA

Casting material: AISI316 - DIN 1.4408
 Production: S3062/E2 - Swivel - Cast
 Surface treatment: "E.P." (Electro polished)





hamma® Snap Shackles

Snap Shackle (Cast Swivel Eye)

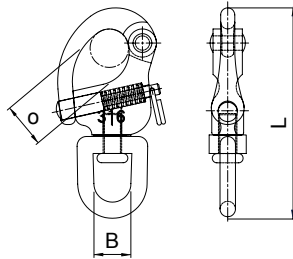
HM-6248

CODE	SIZE (CABLE)	B (MM)	L (MM)	O (MM)	B.L. (KGF)
HM-6248-2001	1	12	67	14	1,100
HM-6248-2021	2	16	87	20	2,000
HM-6248-2304	3	22	126	27	3,500

TECHNICAL DATA

Casting material: AISI316 - DIN 1.4408
 Forging material: AISI316 - DIN 1.4401
 Production: S2482, S2478

Shackle - Cast
 Swivel - Cast
 Pin - Forged
 Surface treatment : "E.P." (Electro polished)



Fixed Snap Shackle

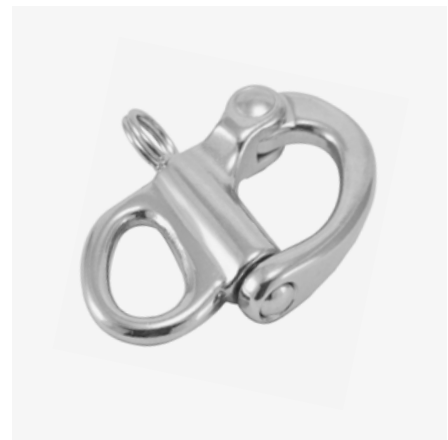
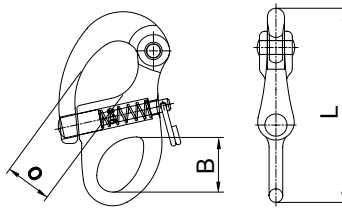
HM-6248

CODE	SIZE (MM)	B (MM)	L (MM)	O (MM)	B.L. (KGF)
HM-6248-3000	0	6.5	32	9	400
HM-6248-3001	1	16	56	12	1,100
HM-6248-3322	2	21	70	19	2,000
HM-6248-3333	3	21	102	25	3,500

TECHNICAL DATA

Casting material: AISI316 - DIN 1.4408
 Forging material: AISI316 - DIN 1.4401
 Production: S2483

Shackle - Cast
 Pin - Forged
 Surface treatment : "E.P." (Electro polished)



Snap Hook

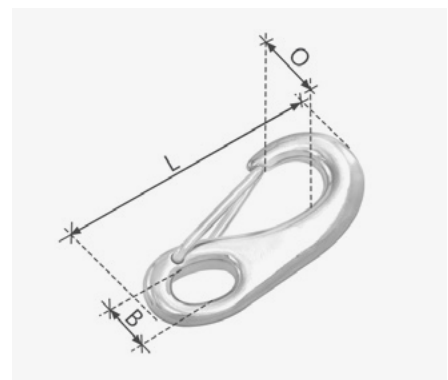
S2470

PRODUCT CODE	SIZE (MM)	ØB (MM)	L (MM)	O (MM)	B.L. (KGS)
HM-6247-0032	32	4	32	7	80
HM-6247-0050	50	6.6	50	10	220
HM-6247-0070	70	9	70	14	500
HM-6247-0100	100	13.8	98	20	900

TECHNICAL DATA

Casting material: AISI316 - DIN 1.4408
 Forging material: AISI316 - DIN 1.4401
 Production: S2470

SNAP - Cast
 Surface treatment : "E.P." (Electro polished)



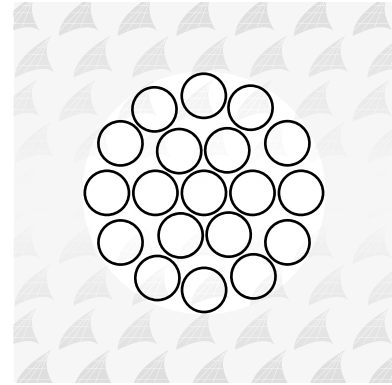
hamma® X Strand 1x19 Metric

Australia's number one selling 1x19 wire rope for over 25 years

CODE	WIRE SIZE	CONSTRUCTION	MBS (KGF)	MBS (KN)	WEIGHT P/M (KG)
HMX19010	1.0mm	1x19	84	0.8	0.005
HMX19015	1.5mm	1x19	189	1.9	0.011
HMX19020	2.0mm	1x19	336	3.3	0.020
HMX19025	2.5mm	1x19	525	5.1	0.031
HMX19030	3.0mm	1x19	756	7.4	0.045
HMX19035	3.5mm	1x19	1,030	10.1	0.073
HMX19040	4.0mm	1x19	1,340	13.1	0.080
HMX19050	5.0mm	1x19	2,100	20.6	0.126
HMX19060	6.0mm	1x19	3,030	29.7	0.180
HMX19070	7.0mm	1x19	4,120	40.4	0.248
HMX19080	8.0mm	1x19	5,380	52.8	0.318
HMX19090	9.0mm	1x19	6,810	66.8	0.407
HMX19100	10.0mm	1x19	8,400	82.5	0.511
HMX19110	11.0mm	1x19	10,574	99.8	0.607
HMX19120	12.0mm	1x19	12,102	119.0	0.739
HMX19140	14.0mm	1x19	16,473	152.0	0.965
HMX19160	16.0mm	1x19	20,500	211.0	1.314
HMX19190	19.0mm	1x19	30,300	298.0	1.781
HMX19200	20.0mm	1x19	33,650	330.0	1.966
HMX19220	22.0mm	1x19	40,687	399.0	2.404

NB Other sizes available/mill certificates available on request.

Wire lengths are available in the following Cut, 305m, 500m, 1000m. Other lengths are available upon request.



hamma®
X STRAND 1X19

hamma® X 1x19 has been Australia's #1 selling 1x19 wire rope for over 25 years. hamma® X 1x19 is a (9/9/1) construction and is used for mast stays, balustrading, guy ropes and structural applications. Terminal Swaging either hamma® Industrial or hamma® Regatta using hydraulic machines is the only termination method.

This is an essential product for the following industries:

- Architectural
- Shade Structure's and Tensile Membranes
- Marine
- Yacht Rigging
- Offshore Oil & Gas
- Subsea Engineering
- Mining
- Glass Facade
- Cable Net Structures



Photo courtesy KZ Marine

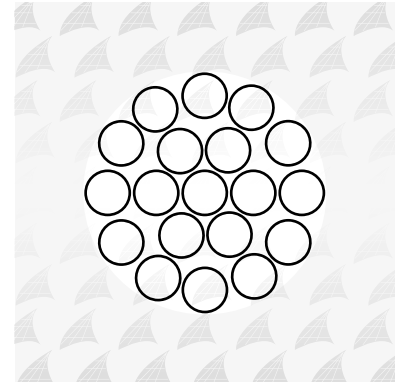
hamma® X Strand 1x19 Imperial

Australia's number one selling 1x19 wire rope for over 25 years

CODE	WIRE SIZE	CONSTRUCTION	MBS (KGF)	MBS (KN)	WEIGHT P/M (KG)
HMX19008	1/32"	1x19	53	0.5	0.003
HMX19012	3/64"	1x19	121	1.2	0.007
HMX19016	1/16"	1x19	215	2.1	0.013
HMX19024	3/32"	1x19	483	4.7	0.029
HMX19032	1/8"	1x19	861	8.4	0.051
HMX19048	3/16"	1x19	1,935	19.0	0.115
HMX19055	7/32"	1x19	2,640	25.9	0.157
HMX19064	1/4"	1x19	3,442	33.8	0.204
HMX19072	9/32"	1x19	4,357	42.7	0.259
HMX19096	3/8"	1x19	7,746	76.0	0.460
HMX19110	7/16"	1x19	10,574	99.8	0.607
HMX19127	1/2"	1x19	13,555	132.9	0.806
HMX19143	9/16"	1x19	17,186	168.5	1.020

NB Other sizes available/mill certificates available on request.

Wire lengths are available in the following Cut, 305m, 500m, 1000m. Other lengths are available upon request.



hamma® X 1x19 has been Australia's #1 selling 1x19 wire rope for over 25 years. hamma® X 1x19 is a (9/9/1) construction and is used for mast stays, balustrading, guy ropes and structural applications. Terminal Swaging either hamma® Industrial or hamma® Regatta using hydraulic machines is the only termination method.

This is an essential product for the following industries:

- Architectural
- Shade Structure's and Tensile Membranes
- Marine
- Yacht Rigging
- Offshore Oil & Gas
- Subsea Engineering
- Mining
- Glass Facade
- Cable Net Structures



Photo courtesy: Cruise Whitsundays

hamma® Pro Strand 1x7

Quality Compacted Rope

CODE	WIRE SIZE	CONSTRUCTION	MBS (KGF)	MBS (KN)	WEIGHT P/M (KG)
HMP17016	1.6mm	1x7	250	2.5	0.016
HMP17020	2.0mm	1x7	450	4.4	0.024
HMP17025	2.5mm	1x7	700	6.9	0.036
HMP17030	3.0mm	1x7	1,025	10.1	0.055
HMP17032	3.2mm	1x7	1,130	11.1	0.059
HMP17035	3.5mm	1x7	1,375	13.5	0.075
HMP17040	4.0mm	1x7	1,800	17.7	0.098

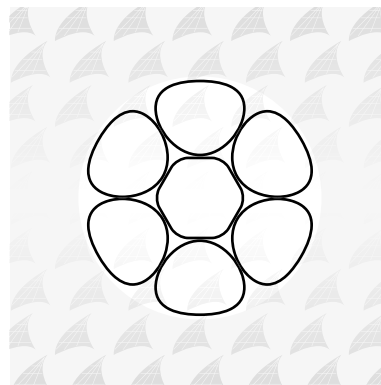
NB Other sizes available/mill certificates available on request.

hamma® Pro 1x7 strand has been developed to provide the marine and architectural industries with a quality 'compacted' strand that has a smooth clean finish, aesthetically superior to any product currently on the market while maintaining the strength and corrosion resistance of all traditional stainless steel wire rope supplied by Arcus Wire Group.

As hamma® Pro 1x7 is a 'compacted' strand there is no need to pre-stress the wire.

This process of strand compaction decreases the constructional stretch of the wire which also results in breaking loads approximately 30% higher than conventional strands.

hamma® Pro 1x7 is a (6/1) Construction and, used for small diameter applications up to and including 4.0mm.



hamma®
PRO STRAND 7

hamma® Pro Strand 1x19

Quality Compacted Rope

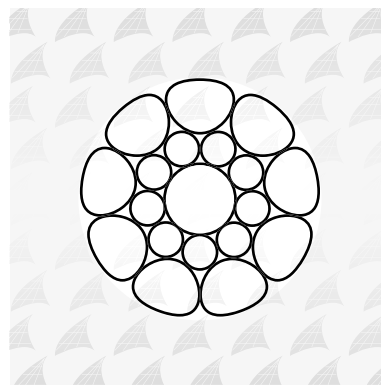
CODE	WIRE SIZE	CONSTRUCTION	MBS (KGF)	MBS (KN)	WEIGHT P/M (KG)
HMP19050	5.0mm	1x19	2,600	25.5	0.156
HMP19060	6.0mm	1x19	3,700	36.3	0.218
HMP19070	7.0mm	1x19	5,100	50.0	0.291
HMP19080	8.0mm	1x19	6,500	63.7	0.381
HMP19090	9.0mm	1x19	9,000	88.3	0.484
HMP19100	10.0mm	1x19	10,250	100.5	0.599
HMP19110	11.0mm	1x19	13,500	132.4	0.719
HMP19120	12.0mm	1x19	14,400	141.2	0.810

NB Other sizes available/mill certificates available on request.

hamma® Pro 1x19 has been developed to provide the marine and architectural industries with a quality 'compacted' strand that has a smooth clean finish, aesthetically superior to any product currently on the market while maintaining the strength and corrosion resistance of all traditional stainless steel wire rope supplied by Arcus Wire Group. As hamma® Pro is a 'compacted' strand

there is no need to pre-stress the wire. This process of strand compaction decreases the constructional stretch of the wire which also results in breaking loads approximately 30% higher than conventional strands.

hamma® Pro 1x19 is a (9/9/1) Construction and, used for diameter applications from 5.0mm from up to and including 12.0mm.



hamma®
PRO STRAND 19

hamma® Pro Strand 1x25

Quality Compacted Rope

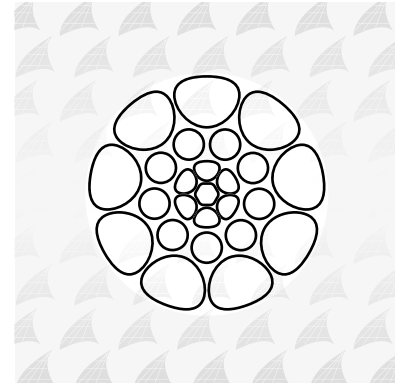
CODE	WIRE SIZE	CONSTRUCTION	MBS (KGF)	MBS (KN)	WEIGHT P/M (KG)
HMP25140	14.0mm	1x25	19,300	189.7	1.142
HMP25160	16.0mm	1x25	25,600	251.7	1.494
HMP25190	19.0mm	1x25	32,000	314.6	2.105

NB Other sizes available/mill certificates available on request.

hamma® Pro 1x25 has been developed to provide the marine and architectural industries with a quality 'compacted' strand that has a smooth clean finish, aesthetically superior to any product currently on the market while maintaining the strength and corrosion resistance of all traditional stainless steel wire rope supplied by Arcus Wire Group.

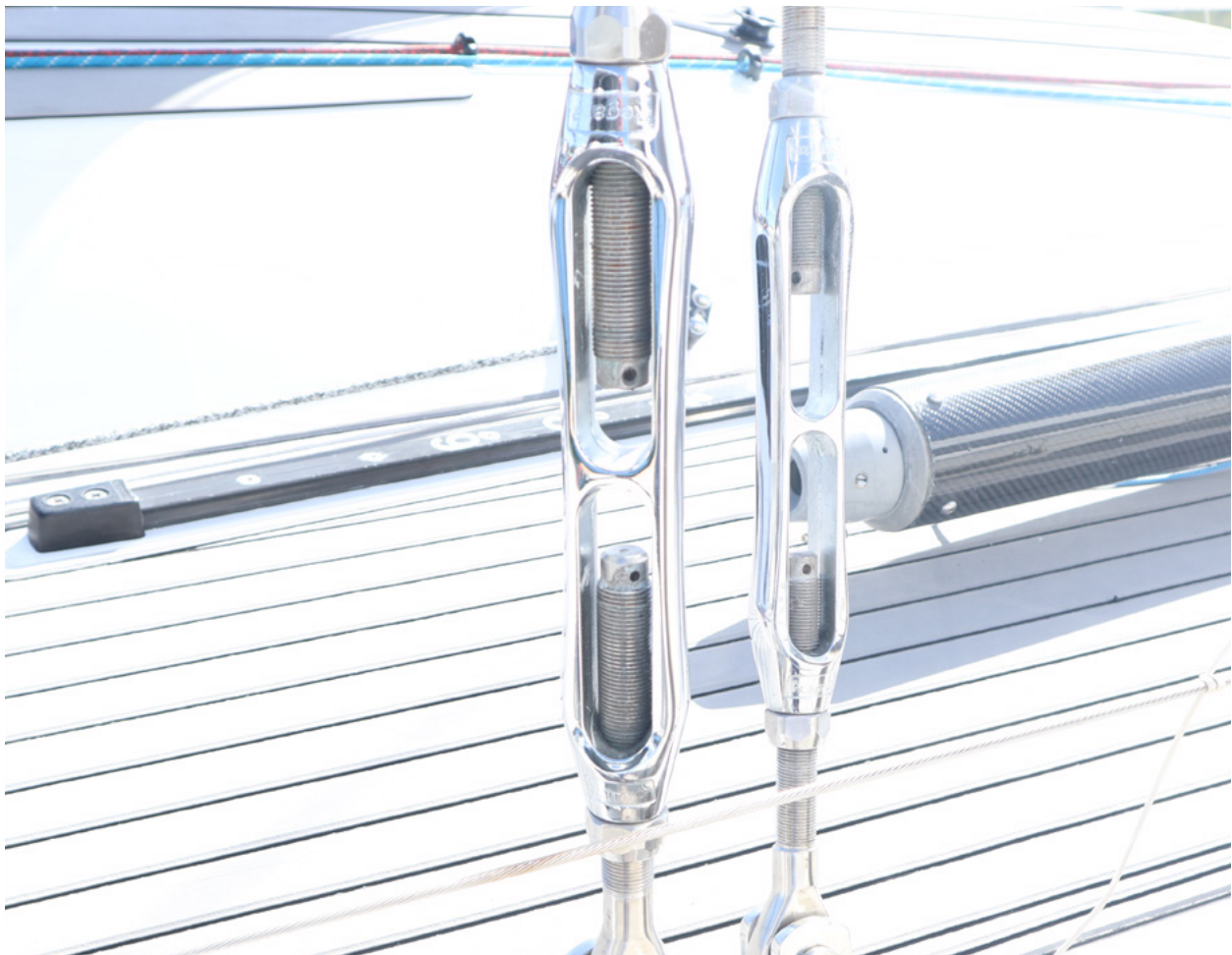
As hamma® Pro is a 'compacted' strand there is no need to pre-stress the wire. This process of strand compaction decreases the constructional stretch of the wire which also results in breaking loads approximately 30% higher than conventional strands.

hamma® Pro 1x25 is a (9/9/6/1) Construction and, used for bigger diameter applications from 14.0mm through to 19.0mm.



hamma® Pro Strand Technical Data:

- Material : AISI316
- Construction: Compacted Strand
- Modulus of Elasticity: 132 +/- 10kN/mm² Note: Limit tension is calculated at 60% of MBL

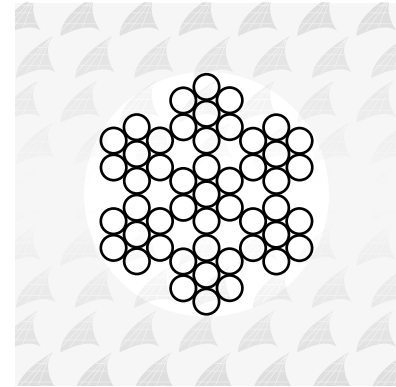


Wire Ropes available in cut lengths and a range of reel lengths. Please talk to your sales representative for pricing and availability.

hamma® X Strand 7x7 Metric

Australia's number one selling 7x7 wire rope for over 25 years

CODE	WIRE SIZE	CONSTRUCTION	MBS (KGF)	MBS (KN)	WEIGHT P/M (KG)
HMX77030	3.0mm	7x7	581	5.7	0.037
HMX77032	3.2mm	7x7	612	6	0.042
HMX77040	4.0mm	7x7	1,030	10.1	0.066
HMX77050	5.0mm	7x7	1,620	15.9	0.105
HMX77060	6.0mm	7x7	2,320	22.8	0.151
HMX77080	8.0mm	7x7	3,674	36.1	0.271



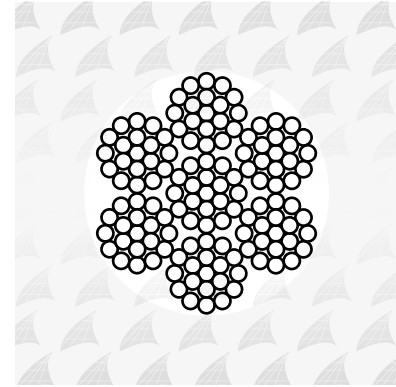
NB Other sizes available/mill certificates available on request.



hamma® X Strand 7x19 Metric

Australia's number one selling 7x19 wire rope for over 25 years

CODE	WIRE SIZE	CONSTRUCTION	MBS (KGF)	MBS (KN)	WEIGHT P/M (KG)
HMX79030	3.0mm	7x19	538	5.3	0.037
HMX79032	3.2mm	7x19	611	6	0.043
HMX79040	4.0mm	7x19	956	9.4	0.067
HMX79050	5.0mm	7x19	1,490	14.6	0.104
HMX79060	6.0mm	7x19	2,105	20.6	0.150
HMX79070	7.0mm	7x19	2,800	27.4	0.208
HMX79080	8.0mm	7x19	3,400	33.3	0.262



NB Other sizes available/mill certificates available on request.



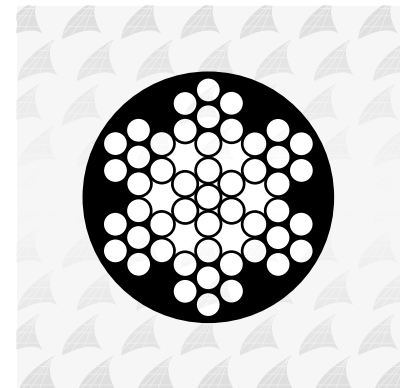
Wire Ropes available in cut lengths and a range of reel lengths. Please talk to your sales representative for pricing and availability.

hamma® Coated 7x7

hamma® Coated 7x7 is coated hamma® X-Strand Wire

CODE	WIRE SIZE	MBS (KGF)	WEIGHT P/M (KG)	GRADE	COATING TYPE	COLOUR
HCWH677032	3.2mm - 5.6mm	612	0.043	316	PVC	White
HCWH677040	4.0mm - 6.4mm	1,030	0.068	316	PVC	White
HCWH677048	4.8mm - 7.2mm	1,493	0.098	316	PVC	White
HCWH677064	6.4mm - 8.0mm	2,320	0.172	316	PVC	White
HCWH477032	3.2mm - 5.6mm	661	0.043	304	PVC	White
HCWH477040	4.0mm - 6.4mm	1,030	0.068	304	PVC	White
HCWH477048	4.8mm - 7.2mm	1,344	0.098	304	PVC	White
HCCL477012	1.2mm - 1.5mm	86	0.007	304	PVC	Clear
HCCL477016	1.6mm - 2.4mm	153	0.011	304	PVC	Clear
HCCL477024	2.4mm - 3.2mm	344	0.024	304	PVC	Clear
HCCL477032	3.2mm - 4.0mm	661	0.043	304	PVC	Clear
HCCL677020	2.0mm - 2.4mm	258	0.018	316	PVC	Clear
HCBL477020	2.0mm - 4.0mm	258	0.018	304	PVC	Blue
HCBL477024	2.4mm - 3.2mm	344	0.024	304	PVC	Blue
HCBL477032	3.2mm - 4.0mm	661	0.043	304	PVC	Blue
HCBL677016	1.6mm - 2.4mm	153	0.011	316	PVC	Blue
HCBL677020	2.0mm - 4.0mm	258	0.018	316	PVC	Blue
HCBL677024	2.4mm - 3.2mm	344	0.024	316	PVC	Blue

NB Other sizes available/mill certificates available on request.

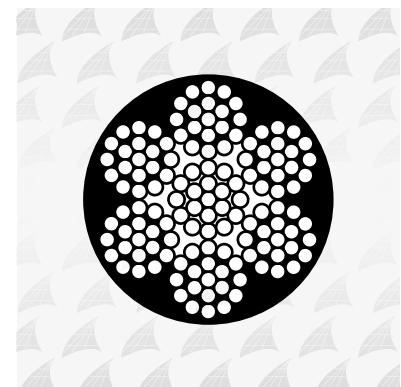


hamma® Coated 7 x 19

hamma® Coated 7x19 is coated hamma® X-Strand Wire

CODE	WIRE SIZE	MBS (KGF)	WEIGHT P/M (KG)	GRADE	COATING TYPE	COLOUR
HCCL479016	1.6mm - 2.0mm	153	0.011	304	PVC	Clear
HCCL479024	2.4mm - 3.2mm	344	0.025	304	PVC	Clear
HCCL479032	3.2mm - 4.0mm	612	0.044	304	PVC	Clear
HCCL679055	5.5mm - 7.2mm	1,807	0.134	316	PVC	Clear
HCCL679064	6.4mm - 8.0mm	2,450	0.171	316	PVC	Clear
HCCL679080	8.0mm - 10.0mm	3,396	0.370	316	PVC	Clear
HCBL679032	3.2mm - 4.0mm	611	0.044	316	PVC	Blue
HCBL479032	3.2mm-4.0mm	612	0.044	304	PVC	Blue

NB Other sizes available/mill certificates available on request.



Wire Ropes available in cut lengths and a range of reel lengths. Please talk to your sales representative for pricing and availability.

hamma[®] Industrial Shackles

D Shackle

S360

PRODUCT CODE	SIZE	A (MM)	B (MM)	L (MM)	B.L. (KGS)
HM-6360-0004	4	4	8	16	550
HM-6360-0005	5	5	10	20	1,000
HM-6360-0006	6	6	12	24	1,700
HM-6360-0008	8	8	16	32	2,800



D Shackle with Collared Pin

S360CP

PRODUCT CODE	SIZE	A (MM)	B (MM)	L (MM)	B.L. (KGS)
HM-6360-0410	10	10	20	40	4,500
HM-6360-0412	12	12	24	48	6,000
HM-6360-0416	16	16	32	64	10,000
HM-6360-0419	19	19	38	76	15,000



D Shackle Wide

S360WO

PRODUCT CODE	SIZE	A (MM)	B (MM)	L (MM)	B.L. (KGS)
HM-6360-9008	8	8	28	35	2,500
HM-6360-9010	10	10	40	60	3,350
HM-6360-9012	12	12	48	72	4,000



Bow Shackle (Anchor)

S370

PRODUCT CODE	SIZE	A (MM)	B (MM)	L (MM)	B.L. (KGS)
HM-6370-0004	4	4	8	20.0	550
HM-6370-0005	5	5	10	25.5	1,000
HM-6370-0006	6	6	12	30.0	1,700
HM-6370-0008	8	8	16	41.0	2,800



Bow Shackle (Anchor) with Collared Pin

S370CP

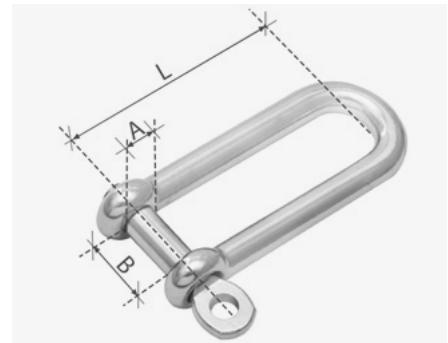
PRODUCT CODE	SIZE	A (MM)	B (MM)	L (MM)	B.L. (KGS)
HM-6370-3010	10	10	20	51.0	4500
HM-6370-3012	12	12	24	61.0	6,000
HM-6370-3016	16	16	32	82.0	10,000
HM-6370-3019	19	19	38	97.0	15,000
HM-6370-3022	22	22	44	110.0	19,000



D Shackle Long

S362

PRODUCT CODE	SIZE	A (MM)	B (MM)	L (MM)	B.L. (KGS)
HM-6362-0006	6	6	12	48	1,700
HM-6362-0008	8	8	16	64	2,500



D Shackle Long with Collared Pin

S362CP

PRODUCT CODE	SIZE	A (MM)	B (MM)	L (MM)	B.L. (KGS)
HM-6362-3010	10	10	20	80	3,500
HM-6362-3012	12	12	24	96	5,400



Halyard Shackle Cross Bar with Locking Pin

S365DLK

PRODUCT CODE	SIZE	A (MM)	B (MM)	L (MM)	B.L. (KGS)
HM-6365-1005	5	5	13	40.50	1,000
HM-6365-1006	6	6	16	46.00	1,600
HM-6365-1008	8	8	22	64.00	2,250



Twisted Shackle

S380

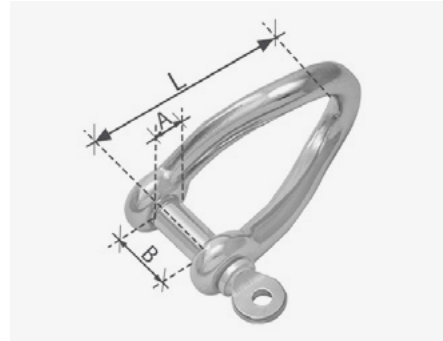
PRODUCT CODE	SIZE	A (MM)	B (MM)	L (MM)	B.L. (KGS)
HM-6380-0006	6	6	12	36	1,600
HM-6380-0008	8	8	16	44	2,800



Twisted Shackle with Collared Pin

S380CP

PRODUCT CODE	SIZE	A (MM)	B (MM)	L (MM)	B.L. (KGS)
HM-6360-8010	10	10	20	51	4,600



Lisa Blair's Yacht Climate Action Now

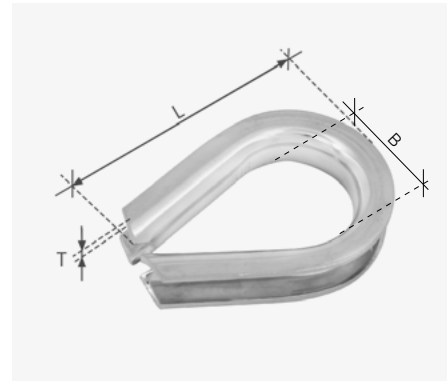
At the launch of Lisa's next adventure to be the first woman to sail solo, non-stop and unassisted around Antarctica

hamma® Industrial Wire Rope Grips & Thimbles

Thimble (Heavy Duty)

SF414

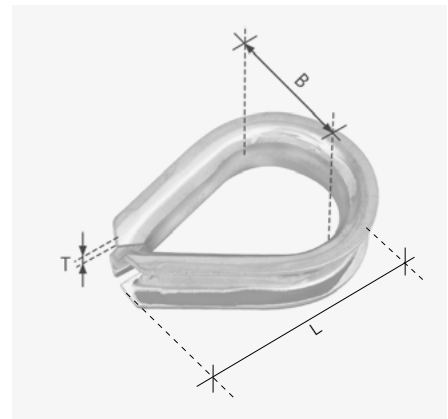
PRODUCT CODE	SIZE (INCH)	B (MM)	L (MM)	T (MM)
HM-6414-0615	5/16"	27.3	63	2
HM-6414-0803	3/8"	29	73	2.5
HM-6414-0201	1/2"	38	92	4
HM-6414-0805	5/8"	45	106	4
HM-6414-0403	3/4"	50.8	125	5



Thimble (Standard)

SF234U

PRODUCT CODE	SIZE (MM)	B (MM)	L (MM)	T (MM)
HM-6234-0002	2	10	25	0.8
HM-6234-0003	3	12.5	28.5	1
HM-6234-0004	4	13	33.0	1.2
HM-6234-0005	5	15.5	36.5	1.2
HM-6234-0006	6	17	40	1.5
HM-6234-0008	8	22.5	51	1.5
HM-6234-0010	10	26	58.5	2
HM-6234-0012	12	31	68	2
HM-6234-0014	14	34	74	2.5
HM-6234-0016	16	37.5	83	2.5
HM-6234-0018	18	40	92	3
HM-6234-0020	20	45	104	3
HM-6234-0022	22	50.5	115	4
HM-6234-0025	25	54	125	4

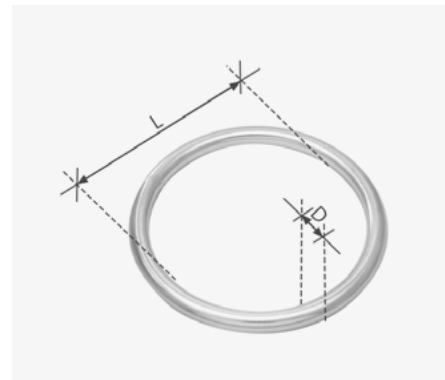


hamma[®] Industrial Rings & Pads

Round Ring

SF317 *

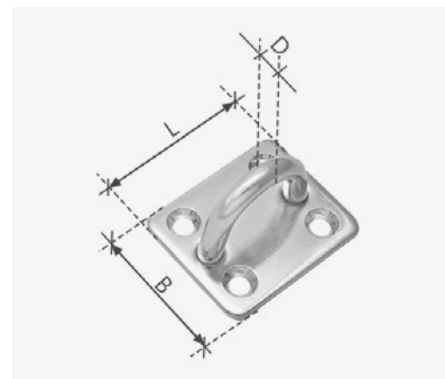
PRODUCT CODE	SIZE (MM)	D (MM)	L (MM)	B.L. (KGS)
HM-6317-0535	5*35	5	35	2,000
HM-6317-0540	5*40	5	40	2,000
HM-6317-0640	6*40	6	40	2,700
HM-6317-0650	6*50	6	50	2,700
HM-6317-0850	8*50	8	50	5,000
HM-6317-1075	10*75	10	75	8,500
HM-6317-1010	10*100	10	100	8,500
HM-6317-1012	10*120	10	120	8,500
HM-6317-1212	12*120	12	120	10,000



Square Pad Eye

SF321 * This item is G304 only

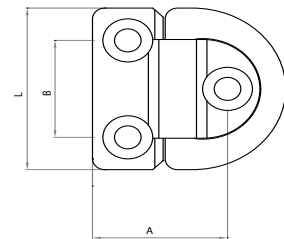
PRODUCT CODE	SIZE (MM)	B (MM)	D (MM)	L (MM)	B.L. (KGS)
HM-4321-0006	6	34	6	40	1,000
HM-4321-0008	8	39	8	50	1,600



Single Pad Eye with Single Ring

SPE/SINGLE/EP

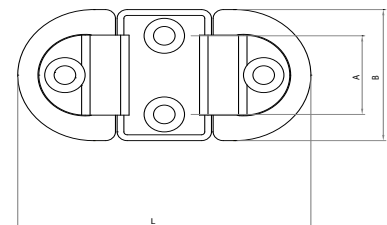
PRODUCT CODE	SIZE (MM)	A (MM)	B (MM)	L (MM)	SCREW USE	B.L. (KGS)
HM-6106-4546	6x46.5	27	45	46.5	M6	2,200
HM-6108-5961	8x61	35	59	61	M8	4,000
HM-6001-0757	10x77	45	75	77	M10	7,000



Double Pad Eye with Double Rings

SPE/DOUBLE/EP

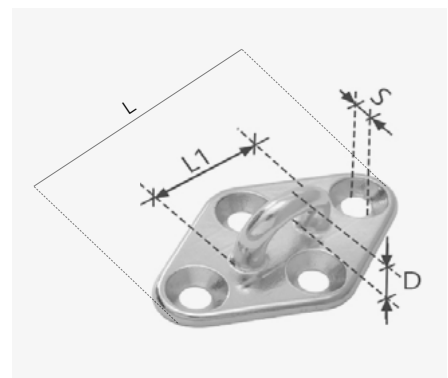
PRODUCT CODE	SIZE (MM)	A (MM)	B (MM)	L (MM)	SCREW USE	B.L. (KGS)
HM-6106-4587	6	27	45	87	M6	3,600
HM-6108-5999	8	35	59	99	M8	6,800
HM-6101-0751	10	45	75	126	M10	12,000



Diamond Pad Eye

SF3211 * This item is G304 only

PRODUCT CODE	SIZE (MM)	D (MM)	L (MM)	L1 (MM)	S (MM)	B.L. (KGS)
HM-4321-1005	5	5	59	15	4.1	700
HM-4321-1006	6	6	64	19	4.1	1000
HM-4321-1008	8	8	80	23	5.1	1600

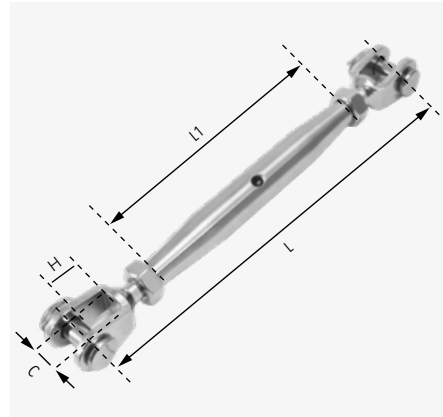


hamma[®] Industrial Turnbuckles & Terminals

Jaw-Jaw Rigging Screw

SF312P

PRODUCT CODE	SIZE	MIN LENGTH (MM)	MAX LENGTH (MM)	L1 (MM)	H (MM)	C (MM)	B.L. (KGS)
HM-6312-0505	M5	115	185	80	12	8	750
HM-6312-0506	M6	142	215	90	12.5	8	1,400
HM-6312-0508	M8	160	259	105	15	11	2,200
HM-6312-0510	M10	200	310	125	18	12	3,450
HM-6312-0512	M12	245	380	150	27	14	5,000
HM-6312-0616	M16	304	440	190	32	17	8,000



Jaw-Swage

SF3121P

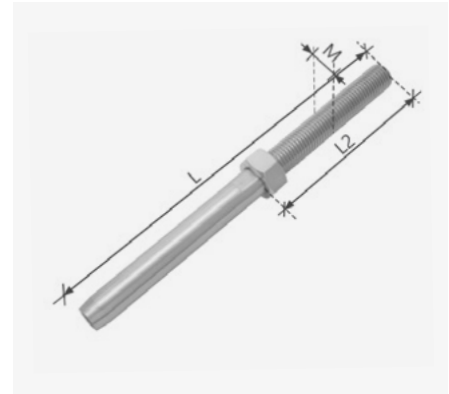
PRODUCT CODE	WIRE SIZE (MM)	M (THREAD)	MIN LENGTH (MM)	MAX LENGTH (MM)	C (MM)	H (MM)	B.L. (KGS)
HM-6312-1122	3mm	M5	142	193	7	11	600
HM-6312-1007	3.2mm	M5	156	225	7	12	600
HM-6312-1008	3.2mm	M6	170	250	8	12	1,000
HM-6312-1050	4mm	M6	185	260	8	12	1,000
HM-6312-1018	4mm	M8	205	295	11	15	1,400
HM-6312-1064	5mm	M8	210	300	11	15	1,400
HM-6312-1010	6mm	M12	295	430	14	28	4,000
HM-6312-1098	8mm	M12	303	435	14	28	4,500
HM-6312-1073	8mm	M14	328	580	15	28	6,000



Swage Stud (RHT)

SF7801

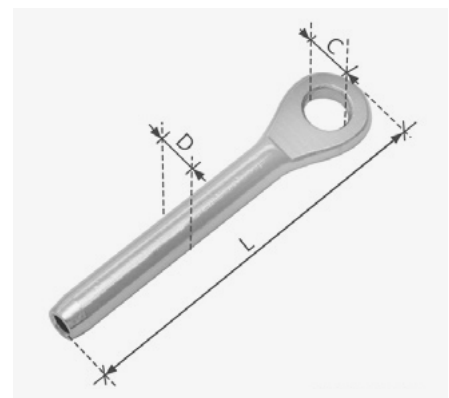
PRODUCT CODE	SIZE (MM)	M (THREAD)	L (MM)	L2 (MM)
HM-6780-1068	3mm	M5	80	40
HM-6780-1020	3mm	M6	97	48
HM-6780-1073	3.2mm	M5	90	40
HM-6780-1007	3.2mm	M6	90	40
HM-6780-1061	4mm	M6	117	57
HM-6780-1076	4mm	M8	115	57
HM-6780-1095	5mm	M8	128	57
HM-6780-1026	5mm	M10	128	61
HM-6780-1134	6mm	M10	162	80
HM-6780-1028	6mm	M12	162	79
HM-6780-1056	8mm	M12	175	76
HM-6780-1171	8mm	M14	180	90



Swage Eye

SF7802

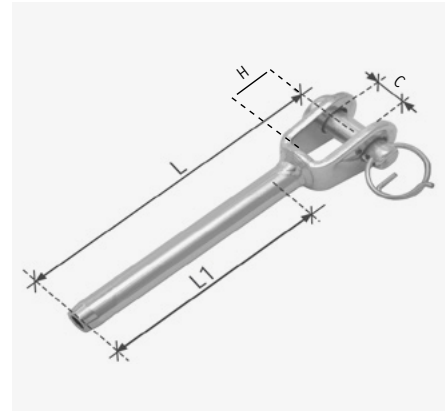
PRODUCT CODE	SIZE (MM/INCH)	C (MM)	D (MM)	L (MM)	B.L. (KGS)
HM-6780-2202	2mm	5.5	5.53	56	850
HM-6780-2225	2.5mm	5.5	5.53	56	850
HM-6780-2203	3mm	6.5	6.35	62	1,000
HM-6780-2718	1/8"	6.5	6.35	62	1,000
HM-6780-2204	4mm	8.5	7.54	77	1,350
HM-6780-2731	3/16"	10.5	9.12	87	2,500
HM-6780-2205	5mm	10.5	9.12	87	2,500
HM-6780-2306	6mm	13	12.54	107.5	4,500
HM-6780-2714	1/4"	13	12.54	107.5	4,500
HM-6780-2208	8mm	14.5	16.13	133	6,700



Swage Fork

SF7803

PRODUCT CODE	SIZE (MM)	PIN (MM)	C (MM)	H (MM)	L (MM)	L1 (MM)	B.L. (KGS)
HM-6780-3418	3.2mm	5	7	12.5	68	38	700
HM-6780-3718	3.2mm	6	8	12.5	68	38	1,250
HM-6780-3904	4mm	6	8	12.5	77	45	1,250
HM-6780-3004	4mm	11	8	15.5	77	45	1,800
HM-6780-3006	6mm	12	14	27.0	109	64	4,000
HM-6780-3908	8mm	12	14	28.0	148	80	4,000



Ferrules & Tools

Sahm Copper Ferrules

Product Code	Fibre Core (Min-Max)	Steel Core (Min-Max)	Swage Die No.	Required Pressure kN	Weight (g)
C015	1.1mm - 1.5mm	1.0mm - 1.1mm	1.5	20	0.001
C020	1.6mm - 2.0mm	1.2mm - 1.6mm	2	30	0.001
C025	2.1mm - 2.6mm	1.7mm - 2.1mm	2.5	45	0.001
C030	2.7mm - 3.1mm	2.2mm - 2.6mm	3	60	0.001
C035	3.2mm - 3.6mm	2.7mm - 3.1mm	3.5	80	0.004
C040	3.7mm - 4.1mm	3.2mm - 3.6mm	4	100	0.006
C045	4.2mm - 4.6mm	3.7mm - 4.2mm	4.5	125	0.009
C050	4.7mm - 5.1mm	4.3mm - 4.6mm	5	180	0.012
C060	5.2mm - 6.1mm	4.7mm - 5.5mm	6	210	0.021
C065	6.2mm - 6.6mm	5.6mm - 6.0mm	6.5	250	0.025
C070	6.7mm - 7.2mm	6.1mm - 6.5mm	7	320	0.032
C080	7.3mm - 8.2mm	6.6mm - 7.2mm	8	410	0.047
C090	8.3mm - 9.2mm	7.3mm - 8.0mm	9	500	0.066



Sahm Stainless Steel Ferrules

PRODUCT CODE	FIBRE CORE (MIN-MAX)	STEEL CORE (MIN-MAX)	SWAGE DIE NO.	REQUIRED PRESSURE KN	WEIGHT (G)
STS015	1.5mm - 1.6mm	1.5mm - 1.6mm	1.5	100	0.005
STS020	2.0mm - 2.1mm	2.0mm - 2.1mm	2	160	0.005
STS025	2.5mm - 2.6mm	2.5mm - 2.6mm	2.5	200	0.010
STS030	3.0mm - 3.2mm	3.0mm - 3.2mm	3	250	0.020
STS035	3.3mm - 3.7mm	3.3mm - 3.7mm	3.5	300	0.035
STS040	4.0mm - 4.2mm	4.0mm - 4.2mm	4	350	0.050
STS045	4.3mm - 4.7mm	4.3mm - 4.7mm	4.5	400	0.070
STS050	5.0mm - 5.2mm	5.0mm - 5.2mm	5	500	0.100
STS060	6.0mm - 6.3mm	6.0mm - 6.3mm	6	600	0.118
STS070	7.0mm - 7.3mm	7.0mm - 7.3mm	7	700	0.129
STS080	8.0mm - 8.3mm	8.0mm - 8.3mm	8	850	0.139



Nicopress Zinc Plated Copper Ferrules

Hand Swage

PRODUCT CODE	WIRE SIZE (MM)	WIRE SIZE (INCH)	SLEEVE LENGTH (BEFORE/AFTER)	TOOL REQUIRED	WEIGHT PER 1000
N12C	1.0mm to 1.2mm	3/64	9.5mm/11mm	N17-B4B, N33V or N64CG	0.09
N16C	1.5mm to 2.0mm	1/16"	9.5mm/11mm	N33V or N64CG	0.14
N24C	2.4mm to 2.5mm	3/32	9.5mm/11mm	N33V or N64CG	0.27
N32C	3.0mm to 3.5mm	1/8"	14mm/19mm	N33V or N64CG	0.77
N40C	4.0mm	5/32	16mm/22mm	N63V	1.04
N48C	4.8mm to 5.0mm	3/16"	24mm/30mm	N63V	2.22
N55C	5.5mm to 6.0mm	7/32"	22mm/27mm	N51F	2.68
N64C	6.4mm to 7.0mm	1/4"	25mm/35mm	N3F6	3.67
N80C	7.2mm to 8.0mm	9/32" & 5/16"	27mm/35mm	N3G9	5.44
N95C	9.5mm to 10.0mm	3/8"	30mm/38mm	N3512HT or N635HT	7.03



Nicopress Copper Stop Ferrules

Hand Swage

PRODUCT CODE	WIRE SIZE (MM)	WIRE SIZE (INCH)	SLEEVE LENGTH	SLEEVE	TOOL REQUIRED	WEIGHT PER 1000
N12ST	1.0mm - 1.2mm	3/64	5.5mm	4.0mm	N17-B4B	0.03
N16ST	1.5mm - 2.0mm	1/16	11.0mm	5.0mm	N33V	0.05
N24ST	2.4mm - 2.5mm	3/32	8.0mm	8.0mm	N51M	0.09
N32ST	3.0mm - 3.5mm	1/8	8.0mm	8.0mm	N51M	0.09
N40ST	4.0mm	5/32	8.0mm	10.7mm	N51M	0.36
N48ST	4.8mm - 5.0mm	3/16	8.0mm	10.7mm	N51M	0.09



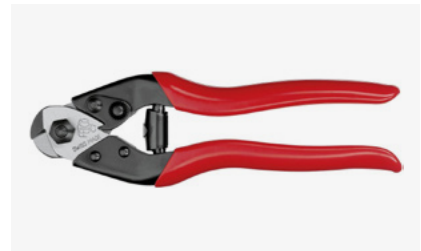
Nicopress Hand Tools

PRODUCT CODE	WIRE SIZE (MM)	WIRE SIZE (INCH)	NO OF GROOVES	TOOL LENGTH	TOOL WEIGHT	SUPPLIED WITH CHECK GAUGE
N33V	1.0 - 2.5mm	3/64", 5/64", 3/32"	3	300mm	1.1kgs	Yes
N63V	3.0mm - 5.0mm	1/8", 5/32", 3/16"	3	508mm	2.7kgs	Yes
N64CG	1.5mm - 3.5mm	1/16", 5/64", 3/32", 1/8"	4	508mm	2.7kgs	Yes
N3F6	6.0mm	1/4"	1	85cm	6.8kgs	Yes



Felco One Hand Wire Cutters

PRODUCT CODE	MAX DIAMETER (MM)	WEIGHT (G)	LENGTH (MM)
FC007	7	270	190



Felco Two Hand Wire Cutters

PRODUCT CODE	MAX DIAMETER (MM)	WEIGHT (G)	LENGTH (MM)
FC009	9	753	325



Felco Two Hand Wire Cutters

PRODUCT CODE	MAX DIAMETER (MM)	WEIGHT (G)	LENGTH (MM)
FC012	12	1500	500



Felco Two Hand Wire Cutters

PRODUCT CODE	MAX DIAMETER (MM)	WEIGHT (G)	LENGTH (MM)
FC016	16	2,300	590



Felco Two Hand Wire Cutters

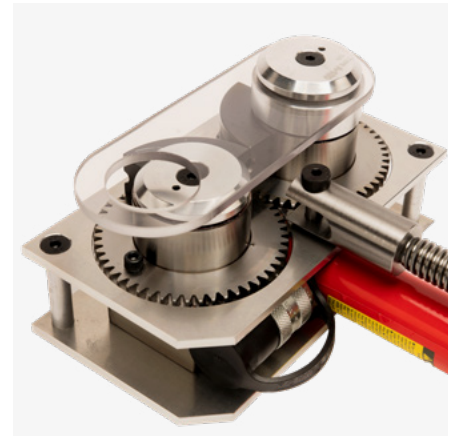
PRODUCT CODE	MAX DIAMETER (MM)	WEIGHT (G)	LENGTH (MM)
FC112	12.7	3,600	730



Wiretechnik A100

A100

PRODUCT CODE	DESCRIPTION
WTA100	Wiretechnik A100 No Pump
WTA100P	Wiretechnik A100 with Hand Pump
WT-D100-2.5MM	Wiretechnik 2.5mm Roll Dies A100
WT-D100-3MM	Wiretechnik 3mm Roll Dies A100
WT-D100-4MM	Wiretechnik 4mm Roll Dies A100
WT-D100-5MM	Wiretechnik 5mm Roll Dies A100



Wiretechnik A200

A200

PRODUCT CODE	DESCRIPTION
WTA200	Wiretechnik A200 No Pump
WTA200P	Wiretechnik A200 with Pump
WT-D2.5-200	Wiretechnik Roll Die 2.5mm
WT-D3-200	Wiretechnik Roll Die 3mm
WT-D4-200	Wiretechnik Roll Die 4mm
WT-D5-200	Wiretechnik Roll Die 5mm
WT-D5.5-200	Wiretechnik Roll Die 5.5mm A200
WT-D6-200	Wiretechnik Roll Die 6mm for A200
WT-D7-200	Wiretechnik Roll Die 7mm
WT-D8-200	Wiretechnik Roll Die 8mm A200



Wiretechnik A270

A270

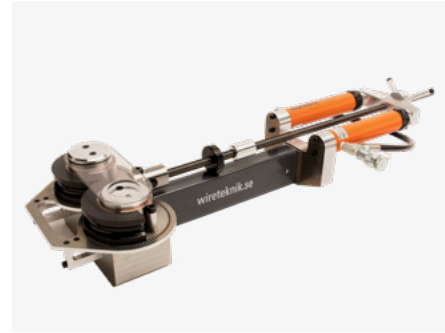
PRODUCT CODE	DESCRIPTION
WTA270	Wiretechnik A270 No Pump
WTA270P	Wiretechnik A270 with Pump
WT-D2.5-270	Wiretechnik Roll Die 2.5mm
WT-D3-270	Wiretechnik Roll Die 3mm
WT-D4-270	Wiretechnik Roll Die 4mm
WT-D5-270	Wiretechnik Roll Die 5mm
WT-D5.5-270	Wiretechnik Roll Die 5.5mm
WT-D6-270	Wiretechnik Roll Die 6mm
WT-D7-270	Wiretechnik Roll Die 7mm
WT-D8-270	Wiretechnik Roll Die 8mm
WT-D10-270	Wiretechnik Roll Die 10mm
WT-D11-270	Wiretechnik Roll Die 11mm
WT-D12-270	Wiretechnik Roll Die 12mm



Wiretechnik A350

A350

PRODUCT CODE	DESCRIPTION
WTA350	Wiretechnik A350 No Pump
WTA350P	Wiretechnik A350 with Pump
WT-D2.5MM-350	Wiretechnik 2.5mm Roll Dies A350
WT-D3MM-350	Wiretechnik 3mm Roll Dies A350
WT-D4MM-350	Wiretechnik 4mm Roll Dies A350
WT-D5MM-350	Wiretechnik 5mm Roll Dies A350
WT-D6MM-350	Wiretechnik 6mm Roll Dies A350
WT-D7MM-350	Wiretechnik 7mm Roll Dies A350
WT-D8MM-350	Wiretechnik 8mm Roll Dies A350
WT-D10MM-350	Wiretechnik 10mm Roll Dies
WT-D11MM-350	Wiretechnik 11mm Roll Dies
WT-D12MM-350	Wiretechnik 12mm Roll Dies A350
WT-D14MM-350	Wiretechnik 14mm Roll Dies A350
WT-D16MM-350	Wiretechnik 16mm Roll Dies A350



Wiretechnik A400

A400

PRODUCT CODE	DESCRIPTION
WTA400	Wiretechnik A400 No Pump
WTA400P	Wiretechnik A400 with Pump
WT-D8-400	Wiretechnik 8mm Roll Dies A400
WT-D10-400	Wiretechnik 10mm Roll Dies A400
WT-D11-400	Wiretechnik 11mm Roll Dies A400
WT-D12-400	Wiretechnik 12mm Roll Dies A400
WT-D14-400	Wiretechnik 14mm Roll Dies A400
WT-D16-400	Wiretechnik 16mm Roll Dies A400
WT-D19-400	Wiretechnik 19mm Roll Dies A400
WT-D22-400	Wiretechnik 22mm Roll Dies A400
WT-D25-26-400	Wiretechnik 25-26mm Roll Dies A400
WT-D28-400	Wiretechnik 28mm Roll Dies A400
WT-D14MM-350	Wiretechnik 14mm Roll Dies A350
WT-D16MM-350	Wiretechnik 16mm Roll Dies A350



Conversions & Codes

CONVERSIONS

IMP	METRIC
1/8	3.17
5/32	3.96
3/16	4.76
7/32	5.55
1/4	6.35
9/32	7.14
5/16	7.93
3/8	9.52
7/16	11.1
1/2	12.7
9/16	14.28
5/8	15.875
3/4	19.05
7/8	22.2
1"	25.4
1 1/8	28.57
1 1/4	31.75

RIGGING SCREWS

THREAD SIZE	CODE
1/8	2
1/4	4
5/16	5
3/8	6
7/16	7
1/2	8
9/16	9
5/8	10
3/4	12
7/8	14
1	16
1 1/8	18
1 1/4	20

FORCE AND TENSILE STRENGTH CONVERSIONS

1 kg	=	9.81N	1 N	=	9.81N
1 Mpa	=	1 N/mm ²	1 Pa	=	1 N/m ²

FORCE AND TENSILE STRENGTH CONVERSIONS

1 Lb	=	4.45N	1 Kip	=	4.45N
1 foot	=	0.305m	1 inch	=	25.44mm
1 ft ²	=	0.0929m ²	1 in. ²	=	645mm ²
1 psi	=	6890 Pa	1 ksi	=	689MPa

WIRE CLEANING AND MAINTENANCE GUIDELINES

CLEANING AND MAINTENANCE OF STAINLESS STEEL

The visual performance of stainless steel depends on five interrelated factors:

- Surface finish- smooth and clean and free of crevices
- Grade selection- appropriate and economical for the environment.
- Good design-rain washing of exterior surfaces and uniform draining with no ponding.
- Maintenance program- regular cleaning
- End user expectations

These technical guidelines outline and suggest how to perform and implement a maintenance program for the cleaning of stainless steel, for removing common stains and also some recommendations for remedial action if stains occur beyond regular maintenance or where such maintenance has not been performed.

MAINTENANCE: ROUTINE REMOVAL OF GRIME

Stainless steel holds its appearance best when it is cleaned and washed regularly. When washing it is best to use a soap or detergent or 1% ammonia solution in warm, low chloride water with cloths or soft brushes to avoid the scratching of the surface. Smears will be reduced if the surface is dried afterwards. This treatment best applies to bare stainless steel. Bleaches or abrasive powders or paste's are not recommended. Simply wiping with a damp cloth is not adequate as is smear corrosive deposits without removing them. Routine cleaning prevents stubborn stains building up. As a rule of thumb, if a window nearby is to be cleaned, then so should the stainless.

- Do not use harsh scrubbing tools scourers or chemicals
 - Do not rub with steel wool or scrape with steel tools. Stainless steel wool scouring pads are available for heavy duty work. They will scratch the stainless steel surface but won't leave fragments to go rusty (cross contamination).
 - Do not use scourers or cleaning cloths that have been used on ordinary steel. If using a scourer, test an inconspicuous area first as you could end up with a bright polished spot that doesn't match the rest of the surface. A scourer (such as Scotchbrite™) is simply plastic fibres with abrasive glued to the to the fibres. It will scratch the surface.
 - Do not rub plastic or other scourers across the grain of brushed or finished surfaces as this will form crevices which will trap contaminants and may cause corrosion.
 - Do not use concentrated bleach or hydrochloric acid-based cleaning products.
 - Do not drag rough items across a stainless surface. Remember that grit under smooth objects can scratch quite badly.
 - Avoid extended contact with salts or carbon steel items especially if wet. All can stain.

REMOVING SPECIFIC STAINING

The following procedures are recommended for getting rid of the most common types of staining.

FINGERPRINTS, OIL & GREASE AND OTHER ORGANIC CONTAMINATION

If mild detergents or strong alkaline formulations don't shift finger marks, you can remove them with a bit of glass cleaner on a soft cloth. Alternatively, you can use a small amount of alcohol, methylated spirits, acetone, mineral turpentine or eucalyptus oil. Then rinse with water then preferably dry.

You can give longer protection to high traffic areas by lightly rubbing with olive oil or baby oil followed by a polish and shine using a soft cloth. Proprietary formulations including lanolin based gels are available and are used extensively by the marine industry.

REMOVING PAINT

Apply paint stripper, taking care to follow all safety instructions. You may need to use a nylon brush or a scourer, but avoid metal scrapers as they will damage the surface.

ADHERENT SCALES AND MORTAR

Cement and mortar splashes should be washed of immediately before they set. Scales from hard water and dried mortar can be removed chemically but not using chemicals that contain hydrochloric acid. Hot 25% acetic acid (vinegar) or warm 10% phosphoric acids are very effective. Following the acid wash, the surface should be neutralised with dilute ammonia or sodium bicarbonate solution, rinsed and dried.

RUST MARKS (TEA STAIN)

The brown surface stains that can occur on stainless steel during the atmospheric exposure are simply cosmetic rust stains. This brown 'tea staining' on stainless steels will not progress to potential structural damage as could occur with a carbon steel structure. As a first step, apply a chalk based, bleach free, cream cleanser with a soft damp cloth and rub gently. If the mark still won't shift, it might be necessary to use a proprietary stainless steel cleaner. These are usually based on dangerous chemicals (such as phosphoric, oxalic or sulphuric acids) and must be handled with care according to the manufacturer's directions. After cleaning it is important to neutralise the acid with a 1% ammonia or sodium bicarbonate solution, rinse with clean water and wipe dry. If the rust has pitted the surface, it can be repaired with professional polishing and expert advice.

REMEDIAL WORK: CLEANING RUST STAINED FLAT SURFACES

Early action after the onset of tea staining is desirable, before the appearance of the underlying surface is changed. If the surface is pitted then it is probable that it will require mechanical repolishing. After mechanically cleaning off tea staining, it is preferable to passivate the surface by using nitric acid gel or, if the item is portable, by immersion in a nitric acid bath.

For marine exposures, passivation is very strongly recommended. In contrast to other acids, nitric acid is a strong, oxidising acid cleaner that has the added advantage that that it is a passivating agent. The Nickel Institute has suggested that rust may be removed by the use of a 10% phosphoric oxalic acid followed by a 1% ammonia solution neutralisation and then rinse with water.

Alternatively, a mild acid base d cleaner such as sulphuric acid (used in some saucepan cleaners) can be used with some care to avoid local changes in appearance.

Never, ever use hydrochloric or sulphuric acids. There are also proprietary chemical cleaning treatments often based on citric acid or other cleaning chelating compounds. Although these agents passivate in the sense of removing free iron and other foreign matter, they do not augment the surface oxide film. Use of liquid acids on site is generally unsatisfactory as contact time is short and the acid may run off and damage adjacent components. Unlike the hydrofluoric acid pickling process used after welding, nitric acid passivation process does not normally change the surface appearance of stainless steel, although it may cloud a mirror polish finish. Careful trials on inconspicuous areas are recommended prior to full scaling. Arcus Wire Group uses electro- polishing and is also used by some contractors to smooth rough edges and both clean and passivate the surface.

AFTERWARDS- PREVENTION OF RECURRENCE

If tea staining has occurred, one or more of the five factors outlined in the introduction have not been considered carefully enough when the wire was designed or manufactured. To improve the incidence of recurrence you can take the following steps:

- Increase the frequency of maintenance
- Check that the product is suitable for the application

- Replace part with a more suitable product for the application/ environment
- Replace the part with a more suitable grade of stainless steel

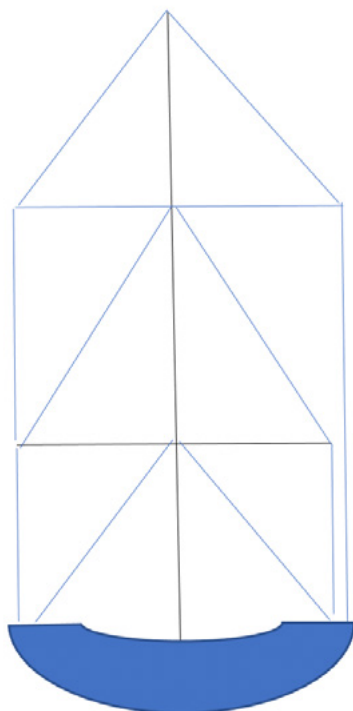
If consideration of these steps indicates an uneconomic result stainless can then be painted. Paint systems using lacquers and polyurethane top coats are available and have been used successfully, but care and understanding is required. Painting the stainless steel is a step that should only be used if the last option as it is irreversible.

Below is a cleaning schedule that is recommended by the stainless steel industry and also Arcus Wire Group. It is important to note that every environment is different, so if you have any questions about cleaning, care and maintenance of stainless steel make sure you contact Arcus Wire Group and get the right advice.

STAINLESS STEEL CLEANING SCHEDULE

ENVIRONMENT	DISTANCE FROM COASTLINE	CLEANING SCHEDULE
Mild	15km+	Every 12 months
Moderate	1-5km	Every 4-6 months
Marine/Industrial/Urban	500m	Every 3 months
Severe Marine/Industrial/ Busy Urban	500m	Weekly

Email all recorded documentation of inspections including photos to sturdyna@arcuswire.com using the project name and date as the reference.



DIS-CONTINUOUS RIGGING

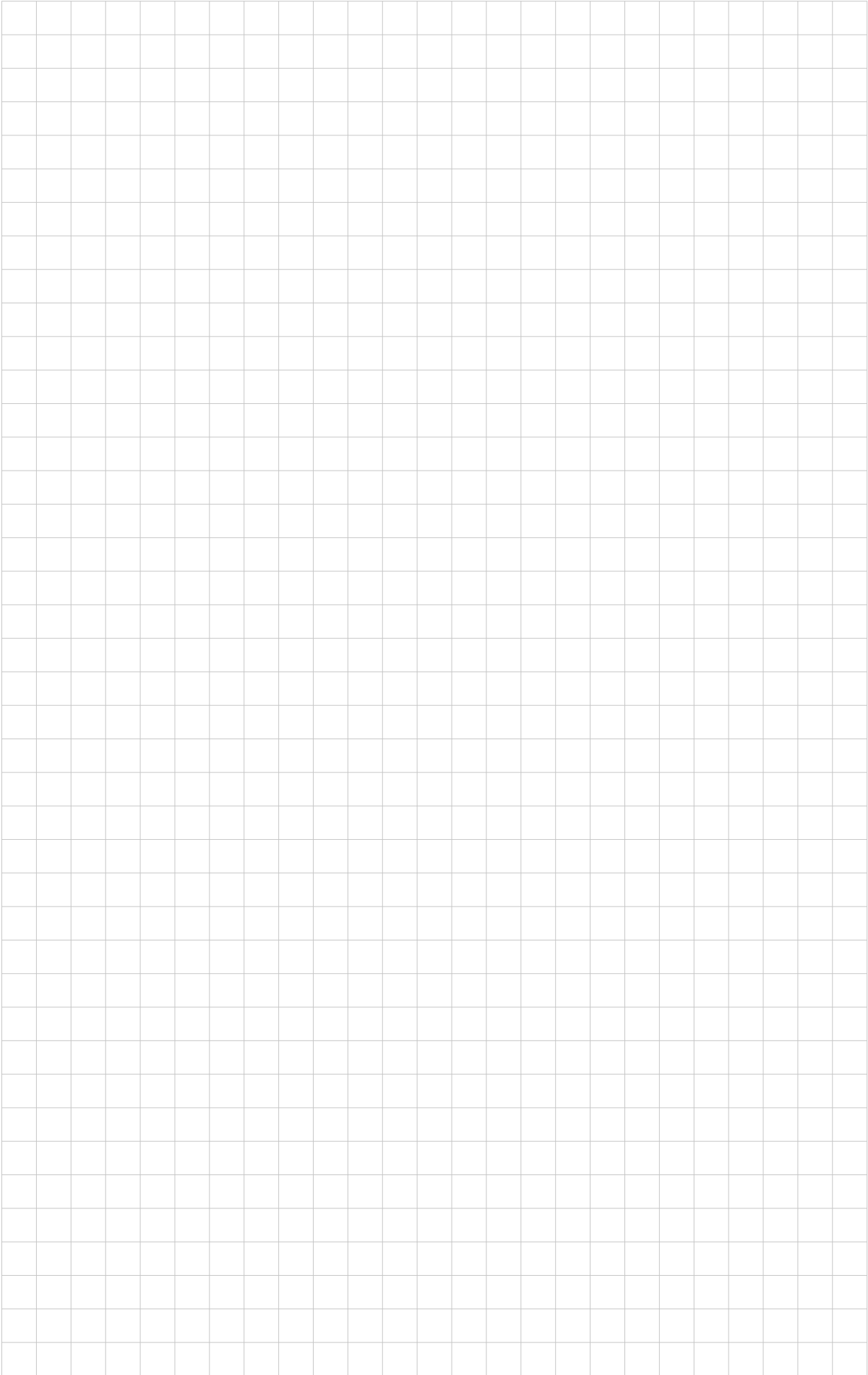
Dis-continuous rigging is made from individual stays in each panel. A panel is deck to spreader, spreader to spreader, and spreader to mast head and referred to numerically from deck to mast head, V being a vertical stay and D being a diagonal stay. The only catch is the top most stay usually is a D running into a V as a single stay over the top most spreader tip. Mainly used for race boats and superyachts

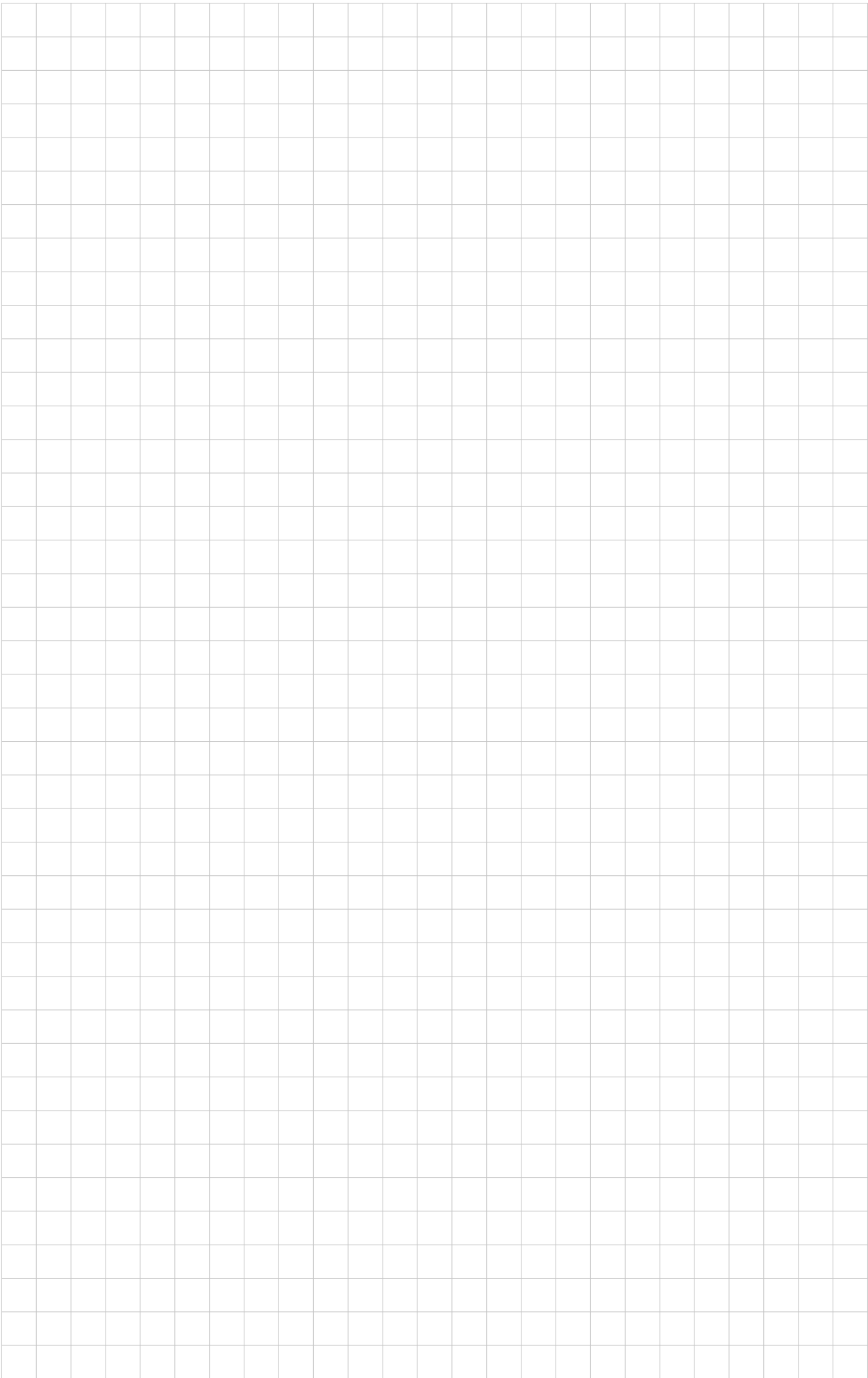
Tuning is a little more difficult with adjustment required at deck level as well as at spreaders.

CONTINUOUS RIGGING

Continuous rigging, the most common rigging, is rigging that runs from the mast top or mid point through spreader ends/tips down to the deck without any terminal breaks in the rigging. Lower stays will be split with two sets, aft lower and forward lower.

Continuous rigging is simple in design and very straightforward for installation as well as being easy to tune, all being done from deck level.







FOR MORE INFORMATION

1800 272 879

SALES@ARCUSWIRE.COM

arcuswire.com